

Anti-TNF Beta Antibody
Catalog # ABO10685

Specification

Anti-TNF Beta Antibody - Product Information

Application	WB
Primary Accession	P01374
Host	Rabbit
Reactivity	Human
Clonality	Polyclonal
Format	Lyophilized

Description

Rabbit IgG polyclonal antibody for Lymphotoxin-alpha(LTA) detection. Tested with WB in Human.

Reconstitution

Add 0.2ml of distilled water will yield a concentration of 500ug/ml.

Anti-TNF Beta Antibody - Additional Information

Gene ID 4049

Other Names

Lymphotoxin-alpha, LT-alpha, TNF-beta, Tumor necrosis factor ligand superfamily member 1, LTA, TNFB, TNFSF1

Calculated MW

22297 MW KDa

Application Details

Western blot, 0.1-0.5 µg/ml, Human

Subcellular Localization

Secreted. Membrane. The homotrimer is secreted. The heterotrimer is membrane-associated.

Protein Name

Lymphotoxin-alpha(LT-alpha)

Contents

Each vial contains 5mg BSA, 0.9mg NaCl, 0.2mg Na₂HPO₄, 0.05mg Thimerosal, 0.05mg NaN₃.

Immunogen

A synthetic peptide corresponding to a sequence at the N-terminus of human TNF beta(45-59aa AQTARQHPKMHLAHS).

Purification

Immunogen affinity purified.

Cross Reactivity

No cross reactivity with other proteins

Storage

At -20°C for one year. After reconstitution, at 4°C for one month. It can also be aliquotted and stored frozen at -20°C for a longer time. Avoid repeated freezing and thawing.

Sequence Similarities

Belongs to the tumor necrosis factor family.

Anti-TNF Beta Antibody - Protein Information

Name LTA

Synonyms TNFB, TNFSF1

Function

Cytokine that in its homotrimeric form binds to TNFRSF1A/TNFR1, TNFRSF1B/TNFR2 and TNFRSF14/HVEM (PubMed: [9462508](http://www.uniprot.org/citations/9462508)). In its heterotrimeric form with LTB binds to TNFRSF3/LTBR (PubMed: [24248355](http://www.uniprot.org/citations/24248355)). Lymphotoxin is produced by lymphocytes and is cytotoxic for a wide range of tumor cells in vitro and in vivo.

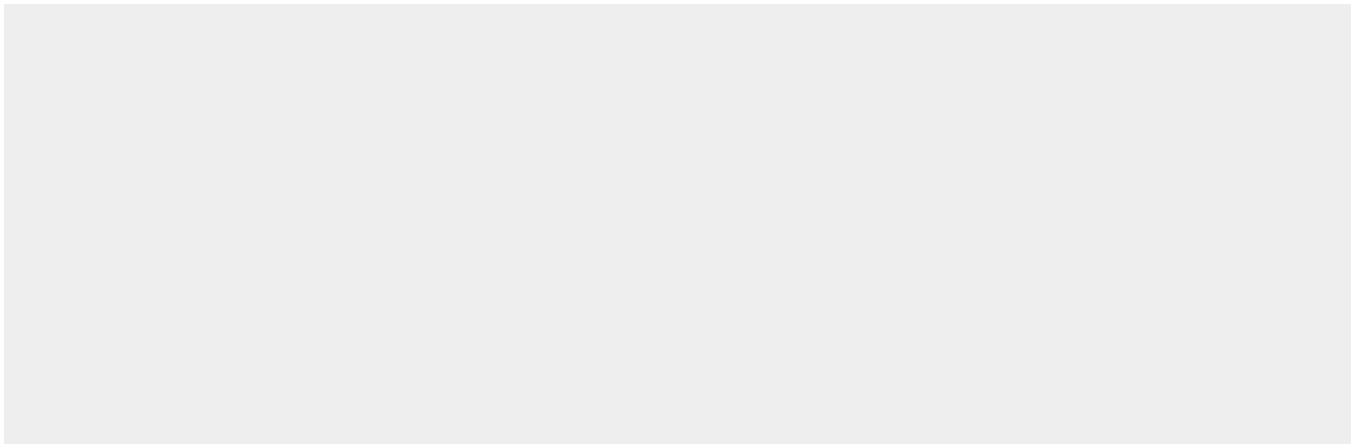
Cellular Location

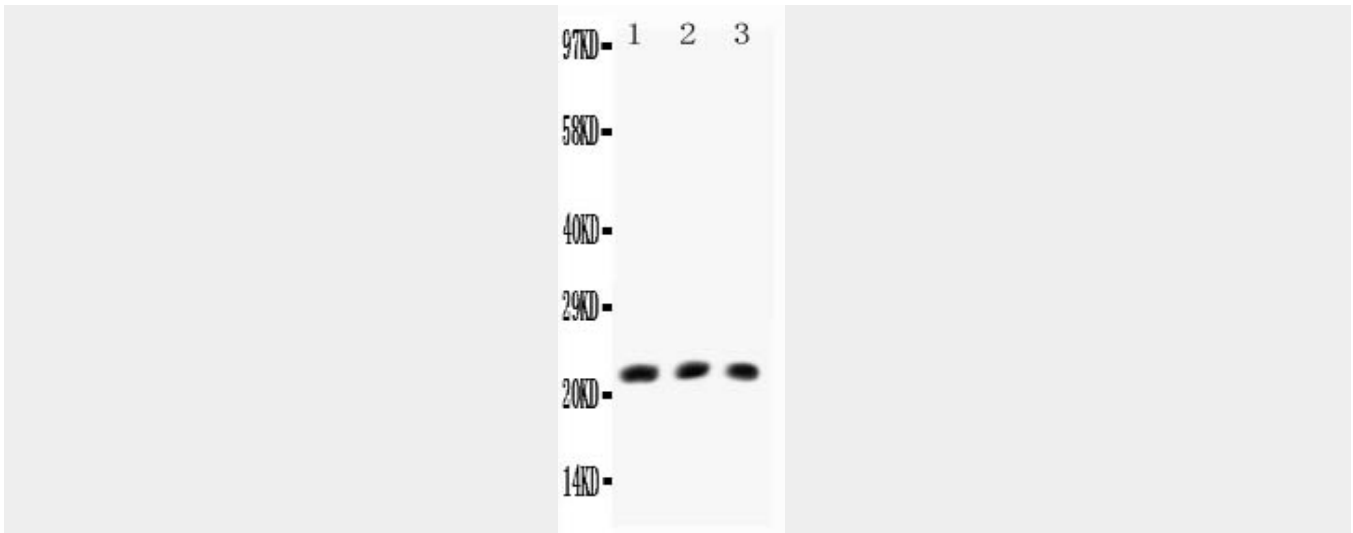
Secreted. Membrane. Note=The homotrimer is secreted. The heterotrimer is membrane-associated

Anti-TNF Beta Antibody - Protocols

Provided below are standard protocols that you may find useful for product applications.

- [Western Blot](#)
- [Blocking Peptides](#)
- [Dot Blot](#)
- [Immunohistochemistry](#)
- [Immunofluorescence](#)
- [Immunoprecipitation](#)
- [Flow Cytometry](#)
- [Cell Culture](#)

Anti-TNF Beta Antibody - Images



Anti-TNF beta antibody, ABO10685, All Western blotting All lanes: Anti-TNF beta (ABO10685) at 0.5ug/ml Lane 1: HELA Whole Cell Lysate at 40ug Lane 2: MCF-7 Whole Cell Lysate at 40ug Lane 3: COLO320 Whole Cell Lysate at 40ug Predicted bind size: 22KD Observed bind size: 22KD

Anti-TNF Beta Antibody - Background

Lymphotoxin (previously known as tumor necrosis factor-beta) is a lymphokine cytokine. It is a protein that is produced by Th1 type T-cells and induces vascular endothelial cells to change their surface adhesion molecules to allow phagocytic cells to bind to them. Lymphotoxin is homologous to Tumor Necrosis Factor beta, but secreted by T-cells. It is paracrine due to the small amounts produced. The effects are similar to TNF-alpha, but TNF-beta is also important for the development of lymphoid organs. Nedwin et al. (1985) found that TNFA and TNFB are closely linked on chromosome 6. Study of hybrid cells made with rearranged human chromosome 6 showed that both TNFA and TNFB map to the 6p23-q12 segment.