

**Anti-CD34 Antibody**  
Catalog # ABO10660**Specification**

---

**Anti-CD34 Antibody - Product Information**

Application	<b>WB, IHC</b>
Primary Accession	<a href="#">P28906</a>
Host	<b>Rabbit</b>
Reactivity	<b>Human, Mouse, Rat</b>
Clonality	<b>Polyclonal</b>
Format	<b>Lyophilized</b>

**Description**

Rabbit IgG polyclonal antibody for Hematopoietic progenitor cell antigen CD34(CD34) detection. Tested with WB, IHC-P, IHC-F in Human;Mouse;Rat.

**Reconstitution**

Add 0.2ml of distilled water will yield a concentration of 500ug/ml.

**Anti-CD34 Antibody - Additional Information**

**Gene ID** 947

**Other Names**

Hematopoietic progenitor cell antigen CD34, CD34, CD34

**Calculated MW**

40716 MW KDa

**Application Details**

Immunohistochemistry(Frozen Section), 0.5-1 µg/ml, Mouse, Rat, Human<br>Immunohistochemistry(Paraffin-embedded Section), 0.5-1 µg/ml, Human, Mouse, Rat, By Heat<br>Western blot, 0.1-0.5 µg/ml, Human, Mouse, Rat<br>

**Subcellular Localization**

Membrane; Single-pass type I membrane protein.

**Tissue Specificity**

Selectively expressed on hematopoietic progenitor cells and the small vessel endothelium of a variety of tissues.

**Protein Name**

Hematopoietic progenitor cell antigen CD34

**Contents**

Each vial contains 5mg BSA, 0.9mg NaCl, 0.2mg Na<sub>2</sub>HPO<sub>4</sub>, 0.05mg Thimerosal, 0.05mg NaN<sub>3</sub>.

**Immunogen**

A synthetic peptide corresponding to a sequence at the C-terminus of human CD34(366-382aa QATSRNGHSARQHVVAD), identical to the related mouse and rat sequences.

### Purification

Immunogen affinity purified.

### Cross Reactivity

No cross reactivity with other proteins

### Storage

**At -20°C for one year. After r°Constitution, at 4°C for one month. It°Can also be aliquotted and stored frozen at -20°C for a longer time.Avoid repeated freezing and thawing.**

### Sequence Similarities

Belongs to the CD34 family.

## Anti-CD34 Antibody - Protein Information

**Name** CD34

### Function

Possible adhesion molecule with a role in early hematopoiesis by mediating the attachment of stem cells to the bone marrow extracellular matrix or directly to stromal cells. Could act as a scaffold for the attachment of lineage specific glycans, allowing stem cells to bind to lectins expressed by stromal cells or other marrow components. Presents carbohydrate ligands to selectins.

### Cellular Location

Membrane; Single-pass type I membrane protein.

### Tissue Location

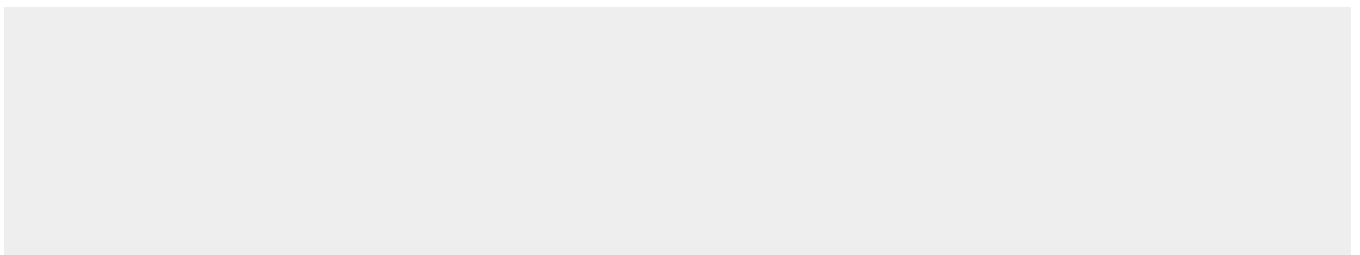
Selectively expressed on hematopoietic progenitor cells and the small vessel endothelium of a variety of tissues

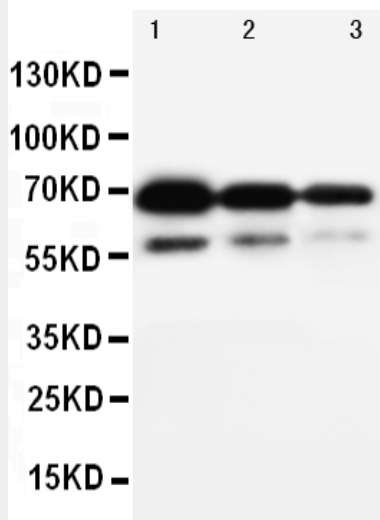
## Anti-CD34 Antibody - Protocols

Provided below are standard protocols that you may find useful for product applications.

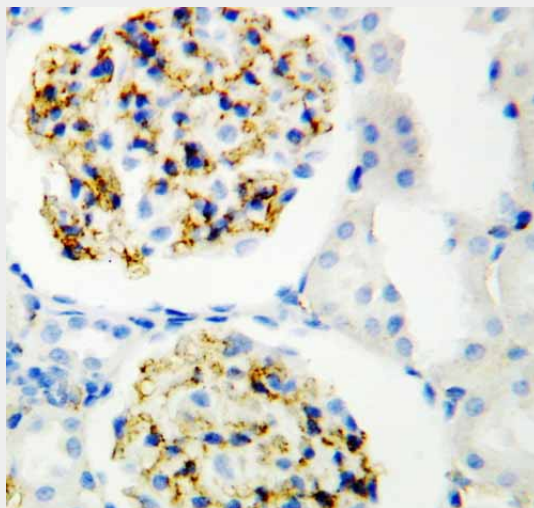
- [Western Blot](#)
- [Blocking Peptides](#)
- [Dot Blot](#)
- [Immunohistochemistry](#)
- [Immunofluorescence](#)
- [Immunoprecipitation](#)
- [Flow Cytometry](#)
- [Cell Culture](#)

## Anti-CD34 Antibody - Images

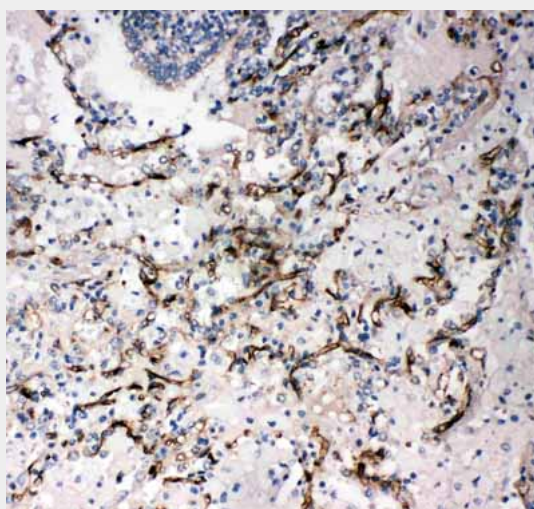




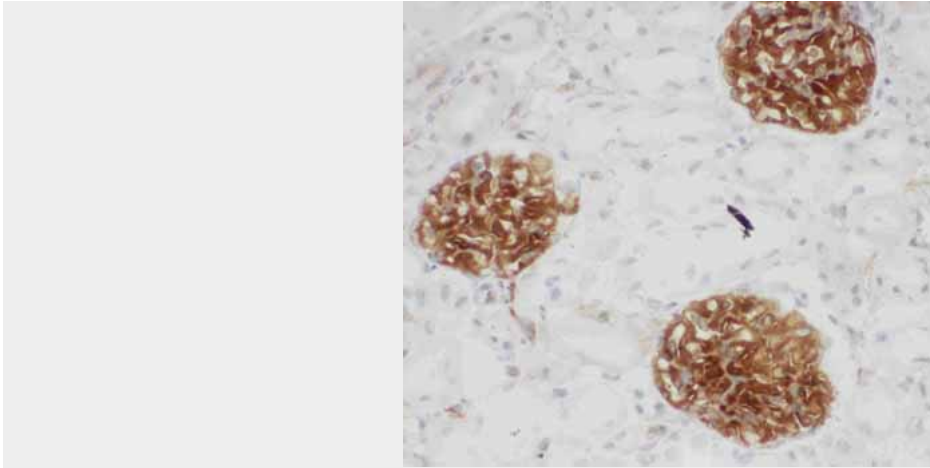
Anti-CD34 antibody, ABO10660, Western blotting Lane 1: Recombinant Human CD34 Protein 10ng Lane 2: Recombinant Human CD34 Protein 5ng Lane 3: Recombinant Human CD34 Protein 2.5ng



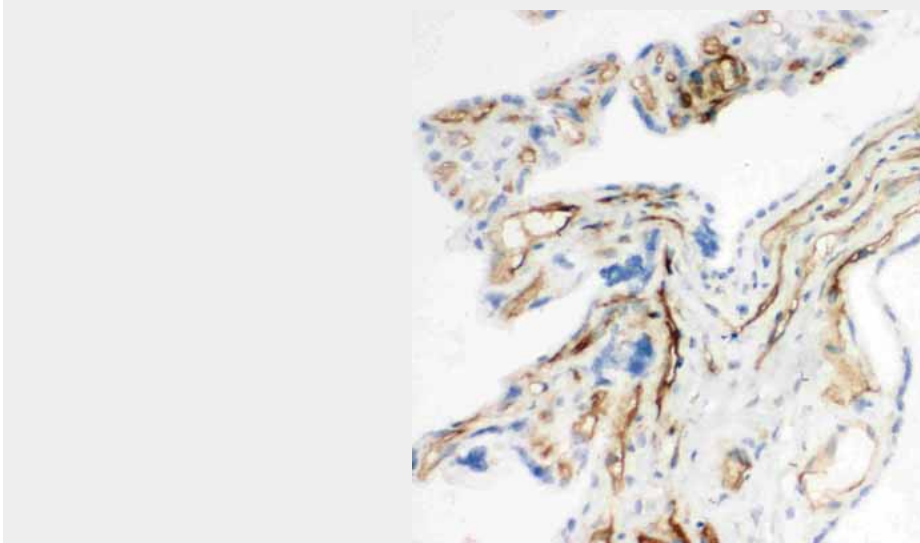
Anti-CD34 antibody, ABO10660, IHC(P) IHC(P): Rat Kidney Tissue



Anti-CD34 antibody, ABO10660, IHC(P) IHC(P): Human Lung Cancer Tissue



Anti-CD34 antibody, ABO10660, IHC(F)IHC(F): Rat Kidney Tissue



Anti-CD34 antibody, ABO10660, IHC(F)IHC(F): Rat Placenta Tissue

### **Anti-CD34 Antibody - Background**

CD34 is a monomeric cell surface antigen with a molecular mass of approximately 110 KD. CD34 is expressed in humans in hematopoietic stem cells, vascular endothelium, and blasts from 30% of patients with acute myeloid and lymphocytic leukemia. The human CD34 gene spans 26 kb and has 8 exons, a structure quite similar to that of the murine gene. By Southern blot analysis of DNA from a panel of human x mouse somatic cell hybrids using a CD34 cDNA probe demonstrate that the gene for CD34 is located on human chromosome 1 in the 1q12----qter region. CD34 plays an important role in the formation of progenitor cells during both embryonic and adult hematopoiesis.