

Anti-Actin Antibody
Catalog # ABO10650**Specification**

Anti-Actin Antibody - Product Information

Application	IHC, WB
Primary Accession	P63261
Host	Rabbit
Reactivity	Human, Mouse, Rat
Clonality	Polyclonal
Format	Lyophilized

Description

Rabbit IgG polyclonal antibody for Actin, cytoplasmic 2(ACTG1) detection. Tested with WB, IHC-P in Human;Mouse;Rat.

Reconstitution

Add 0.2ml of distilled water will yield a concentration of 500ug/ml.

Anti-Actin Antibody - Additional Information

Gene ID 71

Other Names

Actin, cytoplasmic 2, Gamma-actin, Actin, cytoplasmic 2, N-terminally processed, ACTG1, ACTG

Calculated MW

41793 MW KDa

Application Details

Immunohistochemistry(Paraffin-embedded Section), 0.5-1 µg/ml, Human, Mouse, Rat, By Heat
Western blot, 0.1-0.5 µg/ml, Human, Rat, Mouse

Subcellular Localization

Cytoplasm, cytoskeleton.

Protein Name

Actin, cytoplasmic 2

Contents

Each vial contains 5mg BSA, 0.9mg NaCl, 0.2mg Na₂HPO₄, 0.05mg Thimerosal, 0.05mg NaN₃.

Immunogen

A synthetic peptide corresponding to a sequence at the N-terminus of human Actin(39-51aa RHQGVMMVGMGQKD), identical to the related mouse and rat sequences.

Purification

Immunogen affinity purified.

Cross Reactivity

No cross reactivity with other proteins

Storage

At -20°C for one year. After reconstitution, at 4°C for one month. It can also be aliquotted and stored frozen at -20°C for a longer time. Avoid repeated freezing and thawing.

Sequence Similarities

Belongs to the actin family.

Anti-Actin Antibody - Protein Information

Name ACTG1

Synonyms ACTG

Function

Actins are highly conserved proteins that are involved in various types of cell motility and are ubiquitously expressed in all eukaryotic cells.

Cellular Location

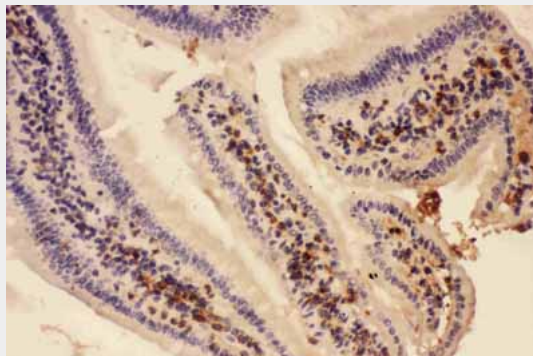
Cytoplasm, cytoskeleton

Anti-Actin Antibody - Protocols

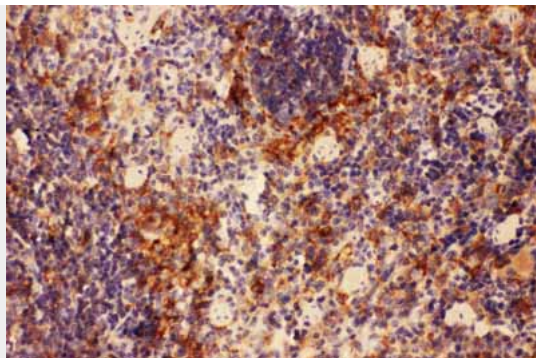
Provided below are standard protocols that you may find useful for product applications.

- [Western Blot](#)
- [Blocking Peptides](#)
- [Dot Blot](#)
- [Immunohistochemistry](#)
- [Immunofluorescence](#)
- [Immunoprecipitation](#)
- [Flow Cytometry](#)
- [Cell Culture](#)

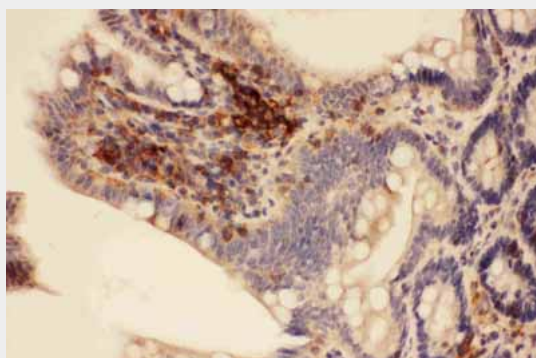
Anti-Actin Antibody - Images



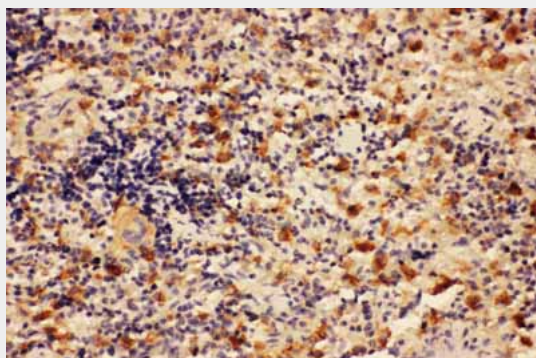
Anti-Actin antibody, ABO10650, IHC(P)IHC(P): Mouse Intestine Tissue



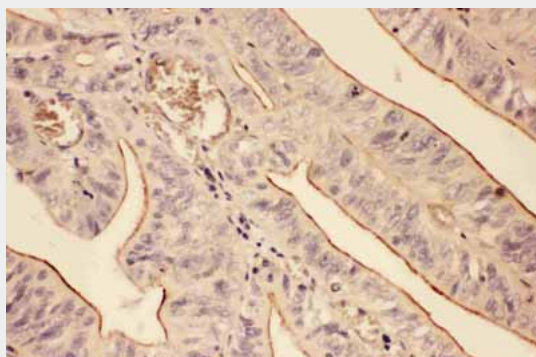
Anti-Actin antibody, ABO10650, IHC(P)IHC(P): Mouse Spleen Tissue



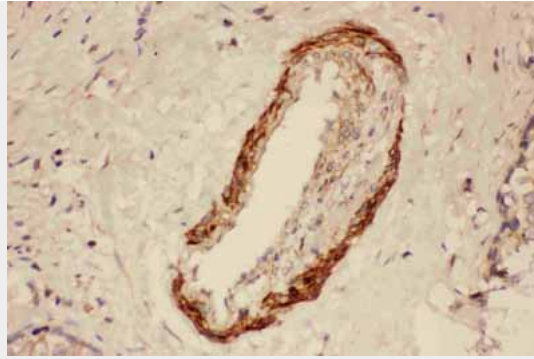
Anti-Actin antibody, ABO10650, IHC(P)IHC(P): Rat Intestine Tissue



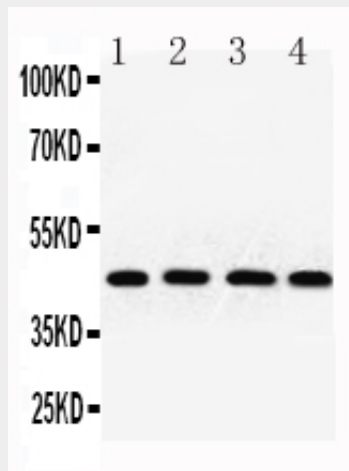
Anti-Actin antibody, ABO10650, IHC(P)IHC(P): Rat Spleen Tissue



Anti-Actin antibody, ABO10650, IHC(P)IHC(P): Human Intestinal Cancer Tissue



Anti-Actin antibody, ABO10650, IHC(P)IHC(P): Human Mammary Cancer Tissue



Anti-Actin antibody, ABO10650, All Western blottingAll lanes: Anti-Actin(ABO10650) at 0.5ug/mlLane 1: Rat Kidney Tissue Lysate at 40ugLane 2: A549 Whole Cell Lysate at 40ugLane 3: MCF-7 Whole Cell Lysate at 40ugLane 4: HEPG2 Whole Cell Lysate at 40ugPredicted bind size: 42KDObserved bind size: 42KD

Anti-Actin Antibody - Background

Actin, a highly conserved protein, is a major component of both the cytoskeletal and contractile structures in the cell types. It varies in amount, being related to the type of differentiation and to the functional state of cells and tissues. The actins exhibit over 90% sequence homology, but each isoform has a unique NH₂-terminal sequence. The isoforms are comprised of three alpha-actin, one beta-actin, two gamma-actin. Because the amino acid sequence of the C-terminal is the same for almost all actins, this antibody has been raised using a synthetic peptide corresponding to the C-terminal 11 residues.