

Anti-Actin Antibody
Catalog # ABO10649

Specification

Anti-Actin Antibody - Product Information

Application	WB, IHC
Primary Accession	P63261
Host	Rabbit
Reactivity	Human, Mouse, Rat
Clonality	Polyclonal
Format	Liquid

Description

Rabbit IgG polyclonal antibody for Actin, cytoplasmic 2(ACTG1) detection. Tested with WB, IHC-P in Human;Mouse;Rat.

Anti-Actin Antibody - Additional Information

Gene ID 71

Other Names

Actin, cytoplasmic 2, Gamma-actin, Actin, cytoplasmic 2, N-terminally processed, ACTG1, ACTG

Calculated MW

41793 MW KDa

Application Details

Immunohistochemistry(Paraffin-embedded Section), 0.5-1 µg/ml, Human, Rat, Mouse, By Heat

Western blot, 0.1-0.5 µg/ml, Human, Rat, Mouse

Subcellular Localization

Cytoplasm, cytoskeleton.

Protein Name

Actin, cytoplasmic 2

Contents

Each vial contains 50% glycerol, 0.9mg NaCl, 0.2mg Na₂HPO₄. Carrier free (No BSA) form available in stock. If you want this antibody carrier free please specify "Carrier Free" or "No BSA" in your order note. "

Immunogen

A synthetic peptide corresponding to a sequence at the C-terminus of human Actin(365-375aa SGPSIVHRKCF), identical to the related mouse and rat sequences.

Purification

Immunogen affinity purified.

Cross Reactivity

No cross reactivity with other proteins

Storage

At -20°C for one year, at 4°C for one month. Avoid repeated freezing and thawing.

Sequence Similarities

Belongs to the actin family.

Anti-Actin Antibody - Protein Information

Name ACTG1

Synonyms ACTG

Function

Actins are highly conserved proteins that are involved in various types of cell motility and are ubiquitously expressed in all eukaryotic cells. May play a role in the repair of noise-induced stereocilia gaps thereby maintains hearing sensitivity following loud noise damage (By similarity).

Cellular Location

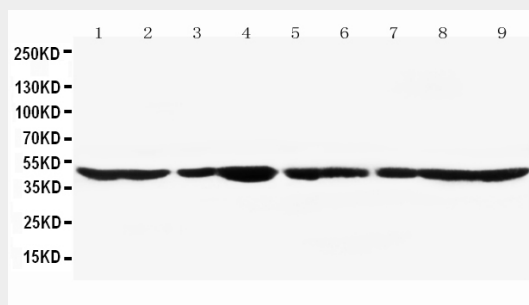
Cytoplasm, cytoskeleton

Anti-Actin Antibody - Protocols

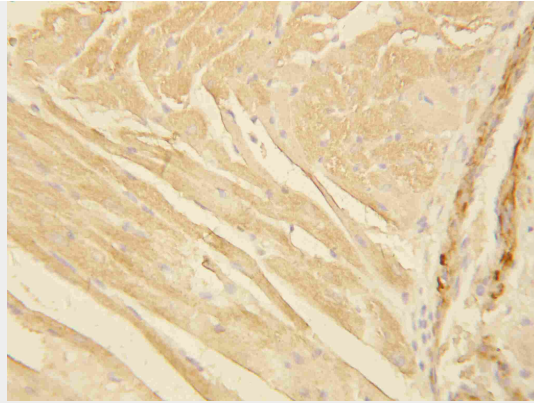
Provided below are standard protocols that you may find useful for product applications.

- [Western Blot](#)
- [Blocking Peptides](#)
- [Dot Blot](#)
- [Immunohistochemistry](#)
- [Immunofluorescence](#)
- [Immunoprecipitation](#)
- [Flow Cytometry](#)
- [Cell Culture](#)

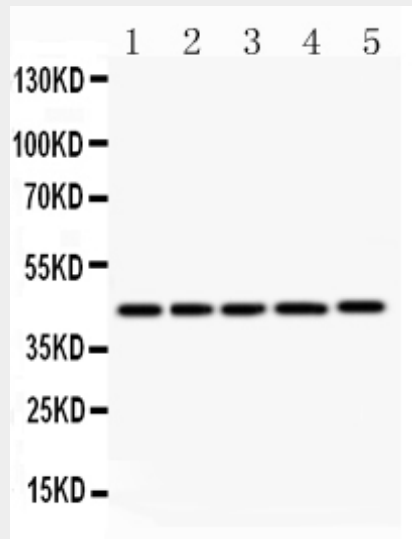
Anti-Actin Antibody - Images



Anti-Actin antibody, ABO10649, Western blotting
Lane 1: Rat Cardiac Muscle Tissue Lysate
Lane 2: Rat Brain Tissue Lysate
Lane 3: Rat Testis Tissue Lysate
Lane 4: Rat Skeletal Muscle Tissue Lysate
Lane 5: MM231 Cell Lysate
Lane 6: HELA Cell Lysate
Lane 7: SMMC Cell Lysate
Lane 8: HT1080 Cell Lysate
Lane 9: SW620 Cell Lysate



Anti-Actin antibody, ABO10649, IHC(P)IHC(P): Rat Cardiac Muscle Tissue



Anti-Actin antibody, ABO10649, IHC(P)All lanes: Anti -Actin (ABO10649) at 0.5ug/mlLane 1: Mouse Brain Tissue Lysate at 50ugLane 2: Mouse Spleen Tissue Lysate at 50ugLane 3: Mouse Thymus Tissue Lysate at 50ugLane 4: HEPA Whole Cell Lysate at 40ugLane 5: NIH3T3 Whole Cell Lysate at 40ugPredicted bind size: 42KDObserved bind size: 42KD

Anti-Actin Antibody - Background

Actin, a highly conserved protein, is a major component of both the cytoskeletal and contractile structures in the cell types. It varies in amount, being related to the type of differentiation and to the functional state of cells and tissues. The actins exhibit over 90% sequence homology, but each isoform has a unique NH₂-terminal sequence. The isoforms are comprised of three alpha-actin, one beta-actin, two gamma-actin. Because the amino acid sequence of the C-terminal is the same for almost all actins, this antibody has been raised using a synthetic peptide corresponding to the C-terminal 11 residues.