

**Anti-TFPI2 Antibody**  
Catalog # ABO10624**Specification**

---

**Anti-TFPI2 Antibody - Product Information**

Application	<b>WB, IHC</b>
Primary Accession	<a href="#">P48307</a>
Host	<b>Rabbit</b>
Reactivity	<b>Human</b>
Clonality	<b>Polyclonal</b>
Format	<b>Lyophilized</b>

**Description**

Rabbit IgG polyclonal antibody for Tissue factor pathway inhibitor 2(TFPI2) detection. Tested with WB, IHC-P in Human.

**Reconstitution**

Add 0.2ml of distilled water will yield a concentration of 500ug/ml.

**Anti-TFPI2 Antibody - Additional Information**

**Gene ID** 7980

**Other Names**

Tissue factor pathway inhibitor 2, TFPI-2, Placental protein 5, PP5, TFPI2

**Calculated MW**

26934 MW KDa

**Application Details**

Immunohistochemistry(Paraffin-embedded Section), 0.5-1 µg/ml, Human, By Heat<br>Western blot, 0.1-0.5 µg/ml, Human<br>

**Subcellular Localization**

Secreted.

**Tissue Specificity**

Umbilical vein endothelial cells, liver, placenta, heart, pancreas, and maternal serum at advanced pregnancy.

**Protein Name**

Tissue factor pathway inhibitor 2(TFPI-2)

**Contents**

Each vial contains 5mg BSA, 0.9mg NaCl, 0.2mg Na<sub>2</sub>HPO<sub>4</sub>, 0.05mg Thimerosal, 0.05mg NaN<sub>3</sub>.

**Immunogen**

A synthetic peptide corresponding to a sequence in the middle region of human TFPI2(170-186aa NVTRYFNPRTCDAF).

**Purification**

Immunogen affinity purified.

**Cross Reactivity**

No cross reactivity with other proteins

**Storage**

**At -20°C for one year. After r°Constitution, at 4°C for one month. It°Can also be aliquotted and stored frozen at -20°C for a longer time.Avoid repeated freezing and thawing.**

**Anti-TFPI2 Antibody - Protein Information**

**Name** TFPI2

**Function**

May play a role in the regulation of plasmin-mediated matrix remodeling. Inhibits trypsin, plasmin, factor VIIa/tissue factor and weakly factor Xa. Has no effect on thrombin.

**Cellular Location**

Secreted.

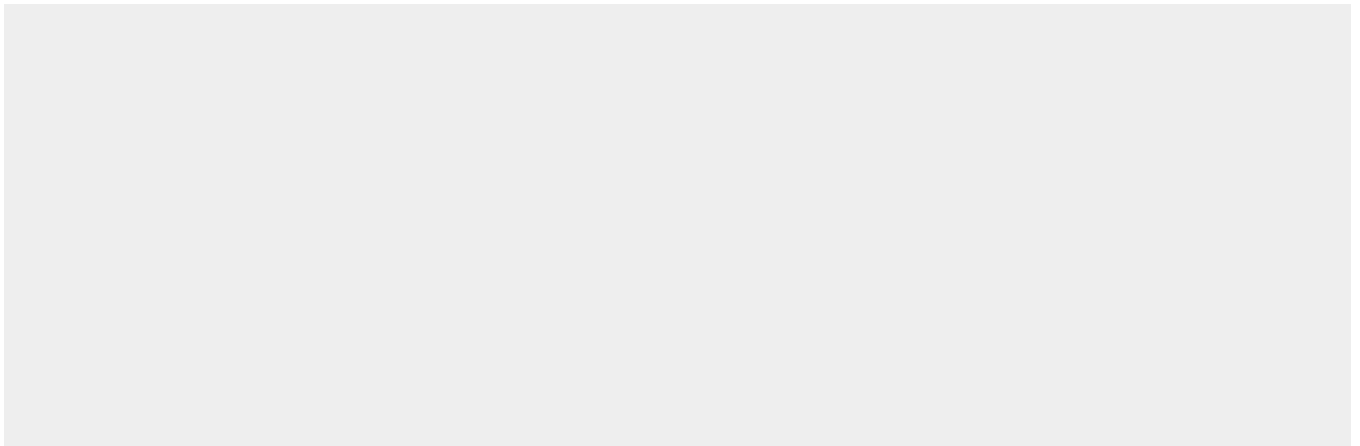
**Tissue Location**

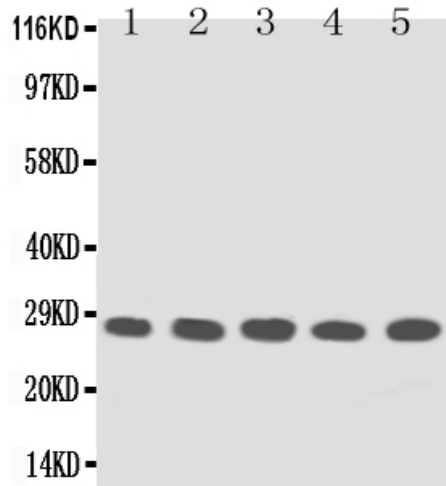
Umbilical vein endothelial cells, liver, placenta, heart, pancreas, and maternal serum at advanced pregnancy

**Anti-TFPI2 Antibody - Protocols**

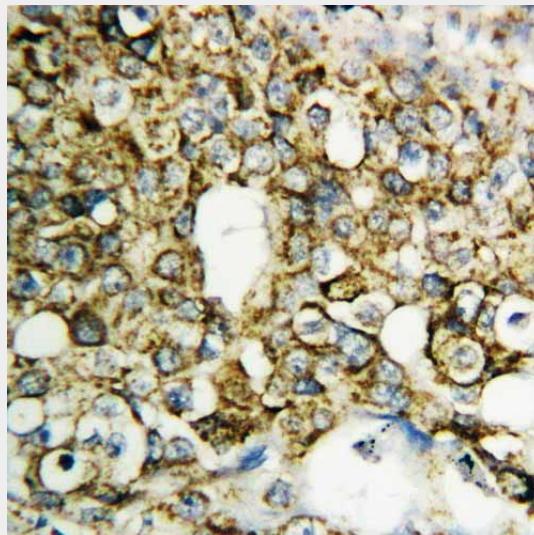
Provided below are standard protocols that you may find useful for product applications.

- [Western Blot](#)
- [Blocking Peptides](#)
- [Dot Blot](#)
- [Immunohistochemistry](#)
- [Immunofluorescence](#)
- [Immunoprecipitation](#)
- [Flow Cytometry](#)
- [Cell Culture](#)

**Anti-TFPI2 Antibody - Images**



Anti-TFPI2 antibody, ABO10624, Western blotting Lane 1: MM453 Cell Lysate Lane 2: MM231 Cell Lysate Lane 3: HELA Cell Lysate Lane 4: HT1080 Cell Lysate Lane 5: JURKAT Cell Lysate



Anti-TFPI2 antibody, ABO10624, IHC(P) IHC(P): Human Mammary Cancer Tissue

**Anti-TFPI2 Antibody - Background**

Tissue factor pathway inhibitor 2, also known as TFPI2, is a human gene which is located at 7q22. It is an important regulator of the extrinsic pathway of blood coagulation through its ability to inhibit factor Xa and factor VIIa-tissue factor activity. After a 22-residue signal peptide, the mature TFPI2 protein contains 213 amino acids with 18 cysteines and 2 canonical N-linked glycosylation sites. The purified recombinant TFPI2 strongly inhibited the amidolytic activities of trypsin and the factor VIIa-tissue factor complex. The latter inhibition was markedly enhanced in the presence of heparin. Mouse TFPI2 mRNA is highly expressed in developing mouse placenta, as in human. And there are also high transcript levels in adult mouse liver and kidney.