

Anti-SSX2 Antibody
Catalog # ABO10612**Specification**

Anti-SSX2 Antibody - Product Information

Application	WB, IHC
Primary Accession	Q16385
Host	Rabbit
Reactivity	Human
Clonality	Polyclonal
Format	Lyophilized

Description

Rabbit IgG polyclonal antibody for Protein SSX2(SSX2) detection. Tested with WB, IHC-P in Human.

Reconstitution

Add 0.2ml of distilled water will yield a concentration of 500ug/ml.

Anti-SSX2 Antibody - Additional Information

Gene ID 6757;727837

Other Names

Protein SSX2, Cancer/testis antigen 5.2, CT5.2, Synovial sarcoma, X breakpoint 2, Tumor antigen HOM-MEL-40, SSX2, SSX2A

Calculated MW

21620 MW KDa

Application Details

Immunohistochemistry(Paraffin-embedded Section), 0.5-1 µg/ml, Human, By Heat

Western blot, 0.1-0.5 µg/ml, Human

Subcellular Localization

Nucleus.

Tissue Specificity

Expressed at high level in the testis. Expressed at low level in thyroid. Not detected in tonsil, colon, lung, spleen, prostate, kidney, striated and smooth muscles. Detected in rhabdomyosarcoma and fibrosarcoma cell lines. Not detected in mesenchymal and epithelial cell lines.

Protein Name

Protein SSX2

Contents

Each vial contains 5mg BSA, 0.9mg NaCl, 0.2mg Na₂HPO₄, 0.05mg Thimerosal, 0.05mg NaN₃.

Immunogen

A synthetic peptide corresponding to a sequence at the C-terminus of human SSX2(157-184aa

NREAQKEERRGTAHRWSSQNTHNIGRF).

Purification

Immunogen affinity purified.

Cross Reactivity

No cross reactivity with other proteins

Storage

At -20°C for one year. After reconstitution, at 4°C for one month. It can also be aliquotted and stored frozen at -20°C for a longer time. Avoid repeated freezing and thawing.

Sequence Similarities

Belongs to the SSX family.

Anti-SSX2 Antibody - Protein Information

Name SSX2

Synonyms SSX2A

Function

Could act as a modulator of transcription.

Cellular Location

Nucleus.

Tissue Location

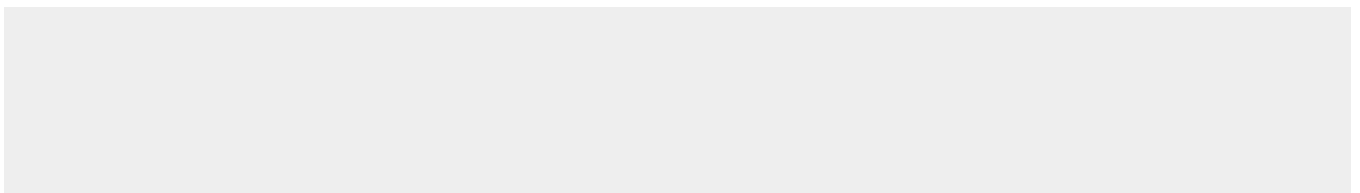
Expressed at high level in the testis. Expressed at low level in thyroid. Not detected in tonsil, colon, lung, spleen, prostate, kidney, striated and smooth muscles. Detected in rhabdomyosarcoma and fibrosarcoma cell lines. Not detected in mesenchymal and epithelial cell lines

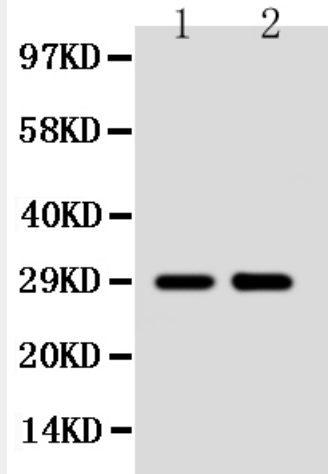
Anti-SSX2 Antibody - Protocols

Provided below are standard protocols that you may find useful for product applications.

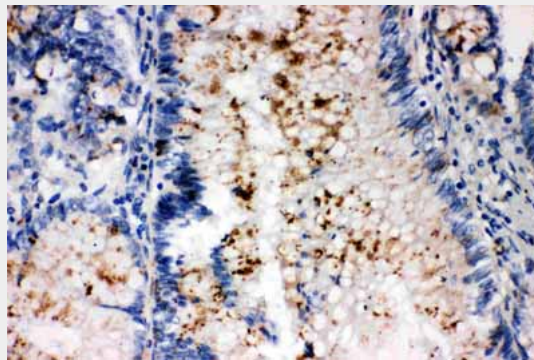
- [Western Blot](#)
- [Blocking Peptides](#)
- [Dot Blot](#)
- [Immunohistochemistry](#)
- [Immunofluorescence](#)
- [Immunoprecipitation](#)
- [Flow Cytometry](#)
- [Cell Culture](#)

Anti-SSX2 Antibody - Images





Anti-SSX2 antibody, ABO10612, Western blotting Lane 1: MCF-7 Cell Lysate Lane 2: HELA Cell Lysate



Anti-SSX2 antibody, ABO10612, IHC(P) IHC(P): Human Intestinal Cancer Tissue

Anti-SSX2 Antibody - Background

Synovial sarcoma, X breakpoint 2, also known as SSX2, is a human gene. The product of this gene belongs to the family of highly homologous synovial sarcoma X(SSX) breakpoint proteins. SSX1, SSX2 and SSX4 genes have been involved in the t(X;18) translocation characteristically found in all synovial sarcomas. The SSX1 and SSX2 genes encode closely related proteins(81% identity) of 188 amino acids that are rich in charged amino acids. The N-terminal portion of each SSX protein exhibits homology to the Kruppel-associated box(KRAB), a transcriptional repressor domain previously found only in Kruppel-type zinc finger proteins.