

**Anti-Cytochrome C Antibody**  
Catalog # ABO10575**Specification**

---

**Anti-Cytochrome C Antibody - Product Information**

Application	IHC, ICC, WB
Primary Accession	<a href="#">P99999</a>
Host	Rabbit
Reactivity	Human, Mouse, Rat
Clonality	Polyclonal
Format	Lyophilized

**Description**

Rabbit IgG polyclonal antibody for Cytochrome c(CYCS) detection. Tested with WB, IHC-P, IHC-F, ICC in Human;Mouse;Rat.

**Reconstitution**

Add 0.2ml of distilled water will yield a concentration of 500ug/ml.

**Anti-Cytochrome C Antibody - Additional Information**

**Gene ID** 54205

**Other Names**

Cytochrome c, CYCS, CYC

**Calculated MW**

11749 MW KDa

**Application Details**

Immunocytochemistry , 0.5-1 µg/ml, Human, -<br>Immunohistochemistry(Frozen Section), 0.5-1 µg/ml, Human, Rat, Mouse<br>Immunohistochemistry(Paraffin-embedded Section), 0.5-1 µg/ml, Human, Rat, Mouse, By Heat<br>Western blot, 0.1-0.5 µg/ml, Human, Mouse, Rat <br>

**Subcellular Localization**

Mitochondrion intermembrane space. Loosely associated with the inner membrane.

**Protein Name**

Cytochrome c

**Contents**

Each vial contains 5mg BSA, 0.9mg NaCl, 0.2mg Na<sub>2</sub>HPO<sub>4</sub>, 0.05mg Thimerosal, 0.05mg NaN<sub>3</sub>.

**Immunogen**

A synthetic peptide corresponding to a sequence at the C-terminus of human Cytochrome C(91-105 aa ERADLIAYLKKATNE), identical to the related mouse and rat sequences.

**Purification**

Immunogen affinity purified.

### Cross Reactivity

No cross reactivity with other proteins

### Storage

At -20°C for one year. After reconstitution, at 4°C for one month. It can also be aliquotted and stored frozen at -20°C for a longer time. Avoid repeated freezing and thawing.

### Sequence Similarities

Belongs to the cytochrome c family.

## Anti-Cytochrome C Antibody - Protein Information

**Name** CYCS

**Synonyms** CYC

### Function

Electron carrier protein. The oxidized form of the cytochrome c heme group can accept an electron from the heme group of the cytochrome c1 subunit of cytochrome reductase. Cytochrome c then transfers this electron to the cytochrome oxidase complex, the final protein carrier in the mitochondrial electron-transport chain.

### Cellular Location

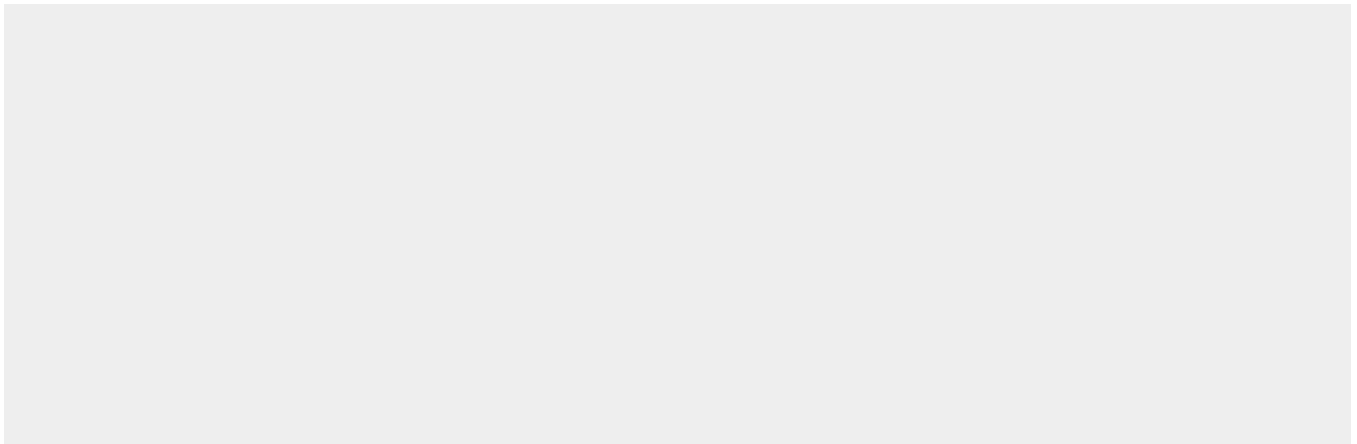
Mitochondrion intermembrane space. Note=Loosely associated with the inner membrane

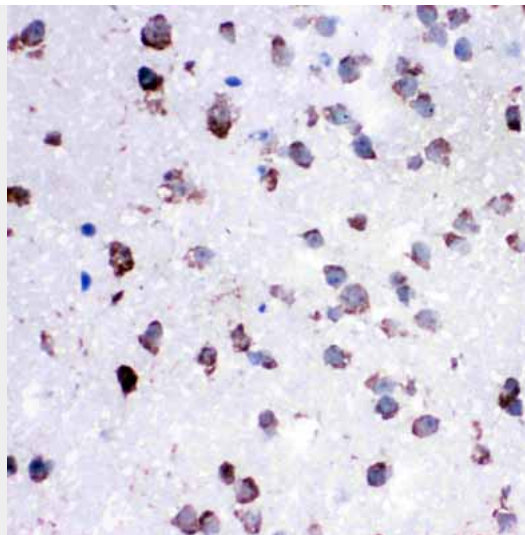
## Anti-Cytochrome C Antibody - Protocols

Provided below are standard protocols that you may find useful for product applications.

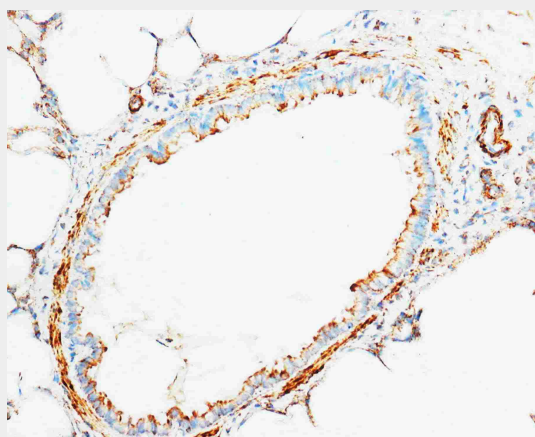
- [Western Blot](#)
- [Blocking Peptides](#)
- [Dot Blot](#)
- [Immunohistochemistry](#)
- [Immunofluorescence](#)
- [Immunoprecipitation](#)
- [Flow Cytometry](#)
- [Cell Culture](#)

## Anti-Cytochrome C Antibody - Images

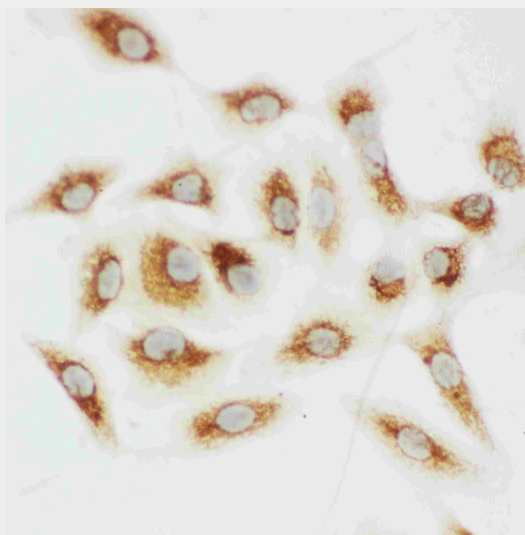




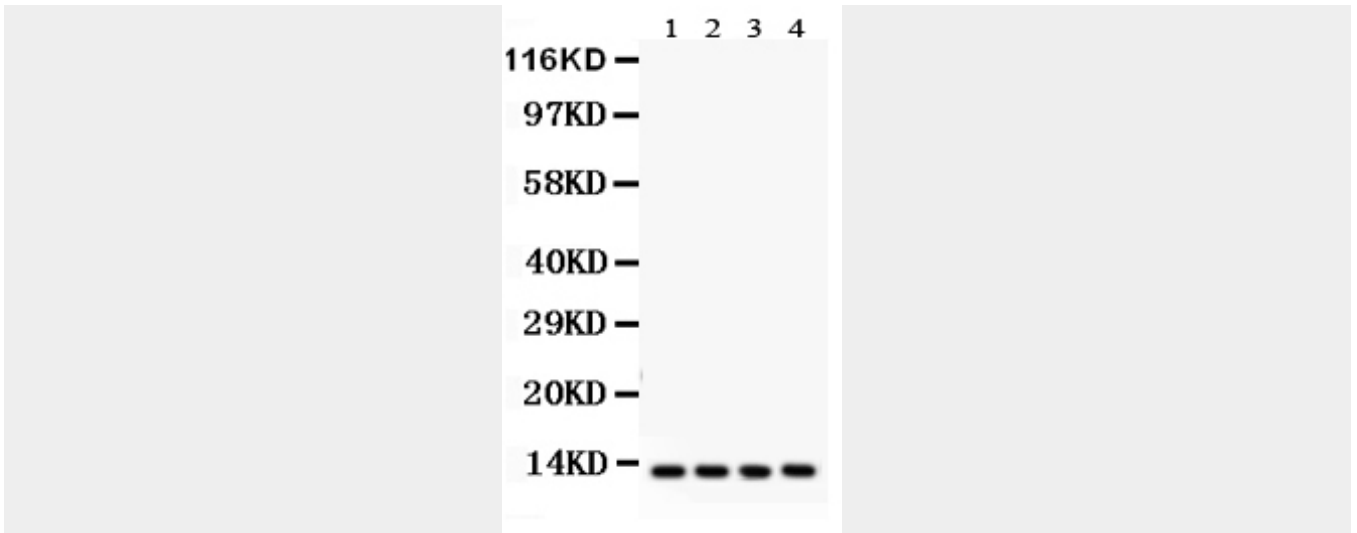
Anti-Cytochrome C antibody, ABO10575, IHC(P)IHC(P): Rat Lung Tissue



Anti-Cytochrome C antibody, ABO10575, IHC(F)IHC(F): Rat Brain Tissue



Anti-Cytochrome C antibody, ABO10575, ICCICC: A549 Cell



Anti-Cytochrome C antibody, ABO10575, Western blotting All lanes: Anti Cytochrome C (ABO10575) at 0.5ug/ml Lane 1: Rat Liver Tissue Lysate at 50ug Lane 2: HELA Whole Cell Lysate at 40ug Lane 3: MCF-7 Whole Cell Lysate at 40ug Lane 4: HEPA Whole Cell Lysate at 40ug Predicted bind size: 12KD Observed bind size: 12KD

#### **Anti-Cytochrome C Antibody - Background**

Cytochrome C is located in the mitochondria of all aerobic cells and is involved in the electron transport system. Human cytochrome c has 104 amino acid residues and a molecular weight of 11,458 and is mapped to 7p15.2. Cytochrome c released from mitochondria has been proposed to be an essential component of an apoptotic pathway responsive to DNA damage and other forms of cell stress. And it has a role in different apoptotic signaling cascades.