

**Anti-Caspase-2 Antibody**  
Catalog # ABO10571**Specification**

---

**Anti-Caspase-2 Antibody - Product Information**

Application	<b>WB</b>
Primary Accession	<a href="#">P42575</a>
Host	<b>Rabbit</b>
Reactivity	<b>Human, Mouse, Rat</b>
Clonality	<b>Polyclonal</b>
Format	<b>Lyophilized</b>

**Description**

Rabbit IgG polyclonal antibody for Caspase-2(CASP2) detection. Tested with WB in Human;Mouse;Rat.

**Reconstitution**

Add 0.2ml of distilled water will yield a concentration of 500ug/ml.

**Anti-Caspase-2 Antibody - Additional Information**

**Gene ID** 835

**Other Names**

Caspase-2, CASP-2, 3.4.22.55, Neural precursor cell expressed developmentally down-regulated protein 2, NEDD-2, Protease ICH-1, Caspase-2 subunit p18, Caspase-2 subunit p13, Caspase-2 subunit p12, CASP2, ICH1, NEDD2

**Calculated MW**

50685 MW KDa

**Application Details**

Western blot, 0.1-0.5 µg/ml, Human, Rat, Mouse<br>

**Tissue Specificity**

Expressed at higher levels in the embryonic lung, liver and kidney than in the heart and brain. In adults, higher level expression is seen in the placenta, lung, kidney, and pancreas than in the heart, brain, liver and skeletal muscle.

**Protein Name**

Caspase-2(CASP-2)

**Contents**

Each vial contains 5mg BSA, 0.9mg NaCl, 0.2mg Na<sub>2</sub>HPO<sub>4</sub>, 0.05mg Thimerosal, 0.05mg NaN<sub>3</sub>.

**Immunogen**

A synthetic peptide corresponding to a sequence at the C-terminus of human Caspase-2(417-439aa REGYAPGTEFHRCKEMSEYCYSTL), identical to the related rat and mouse sequences.

### Purification

Immunogen affinity purified.

### Cross Reactivity

No cross reactivity with other proteins

### Storage

**At -20°C for one year. After r°Constitution, at 4°C for one month. It°Can also be aliquotted and stored frozen at -20°C for a longer time.Avoid repeated freezing and thawing.**

### Sequence Similarities

Belongs to the peptidase C14A family.

## Anti-Caspase-2 Antibody - Protein Information

**Name** CASP2

**Synonyms** ICH1, NEDD2

### Function

Is a regulator of the cascade of caspases responsible for apoptosis execution (PubMed:<a href="http://www.uniprot.org/citations/8087842" target="\_blank">8087842</a>, PubMed:<a href="http://www.uniprot.org/citations/11156409" target="\_blank">11156409</a>, PubMed:<a href="http://www.uniprot.org/citations/15073321" target="\_blank">15073321</a>). Might function by either activating some proteins required for cell death or inactivating proteins necessary for cell survival (PubMed:<a href="http://www.uniprot.org/citations/15073321" target="\_blank">15073321</a>). Associates with PIDD1 and CRADD to form the PIDDosome, a complex that activates CASP2 and triggers apoptosis in response to genotoxic stress (PubMed:<a href="http://www.uniprot.org/citations/15073321" target="\_blank">15073321</a>).

### Tissue Location

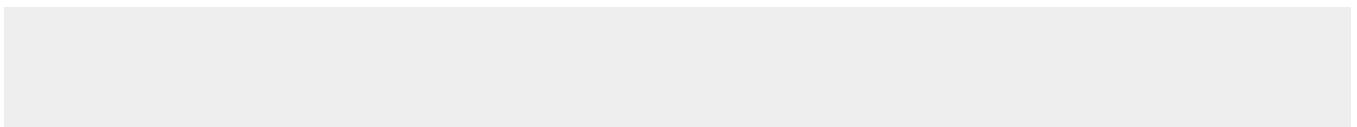
Expressed at higher levels in the embryonic lung, liver and kidney than in the heart and brain. In adults, higher level expression is seen in the placenta, lung, kidney, and pancreas than in the heart, brain, liver and skeletal muscle

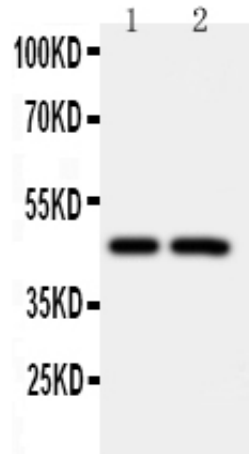
## Anti-Caspase-2 Antibody - Protocols

Provided below are standard protocols that you may find useful for product applications.

- [Western Blot](#)
- [Blocking Peptides](#)
- [Dot Blot](#)
- [Immunohistochemistry](#)
- [Immunofluorescence](#)
- [Immunoprecipitation](#)
- [Flow Cytometry](#)
- [Cell Culture](#)

## Anti-Caspase-2 Antibody - Images





Anti-Caspase-2 antibody, ABO10571, Western blotting Lane 1: CEM Cell Lysate Lane 2: SMMC Cell Lysate

### **Anti-Caspase-2 Antibody - Background**

Caspase-2, which is involved in stress-induced apoptosis, is recruited into a large protein complex, the molecular composition of which remains elusive. activation of caspase-2 occurs in a complex that contains the death domain-containing protein PIDD, whose expression is induced by p53, and the adaptor protein RAIDD. Increased PIDD expression resulted in spontaneous activation of caspase-2 and sensitization to apoptosis by genotoxic stimuli. Caspase-2 acts both as a positive and negative cell death effector, depending upon cell lineage and stage of development.