

Anti-TIMP-4 Antibody
Catalog # ABO10561

Specification

Anti-TIMP-4 Antibody - Product Information

| | |
|-------------------|------------------------|
| Application | WB, IHC |
| Primary Accession | Q99727 |
| Host | Rabbit |
| Reactivity | Human, Mouse, Rat |
| Clonality | Polyclonal |
| Format | Liquid |

Description

Rabbit IgG polyclonal antibody for Metalloproteinase inhibitor 4(TIMP4) detection. Tested with WB, IHC-P in Human;Mouse;Rat.

Anti-TIMP-4 Antibody - Additional Information

Gene ID 7079

Other Names

Metalloproteinase inhibitor 4, Tissue inhibitor of metalloproteinases 4, TIMP-4, TIMP4

Calculated MW

25503 MW KDa

Application Details

Immunohistochemistry(Paraffin-embedded Section), 0.5-1 µg/ml, Human, Rat, Mouse, By Heat
Western blot, 0.1-0.5 µg/ml, Human, Rat, Mouse

Subcellular Localization

Secreted.

Tissue Specificity

Abundant in heart and present at low levels in many other tissues.

Protein Name

Metalloproteinase inhibitor 4

Contents

Each vial contains 50% glycerol, 0.9mg NaCl, 0.2mg Na₂HPO₄. Carrier free (No BSA) form available in stock. If you want this antibody carrier free please specify "Carrier Free" or "No BSA" in your order note. "

Immunogen

A synthetic peptide corresponding to a sequence at the C-terminus of human TIMP4(208-224aa YRGHLPLRKEFVDIVQP), different from the related rat sequence by two amino acids, and from the related mouse sequence by three amino acids.

Purification

Immunogen affinity purified.

Cross Reactivity

No cross reactivity with other proteins

Storage

At -20°C for one year, at 4°C for one month. Avoid repeated freezing and thawing.

Sequence Similarities

Belongs to the protease inhibitor I35 (TIMP) family.

Anti-TIMP-4 Antibody - Protein Information

Name TIMP4

Function

Complexes with metalloproteinases (such as collagenases) and irreversibly inactivates them by binding to their catalytic zinc cofactor. Known to act on MMP-1, MMP-2, MMP-3, MMP-7 and MMP-9.

Cellular Location

Secreted.

Tissue Location

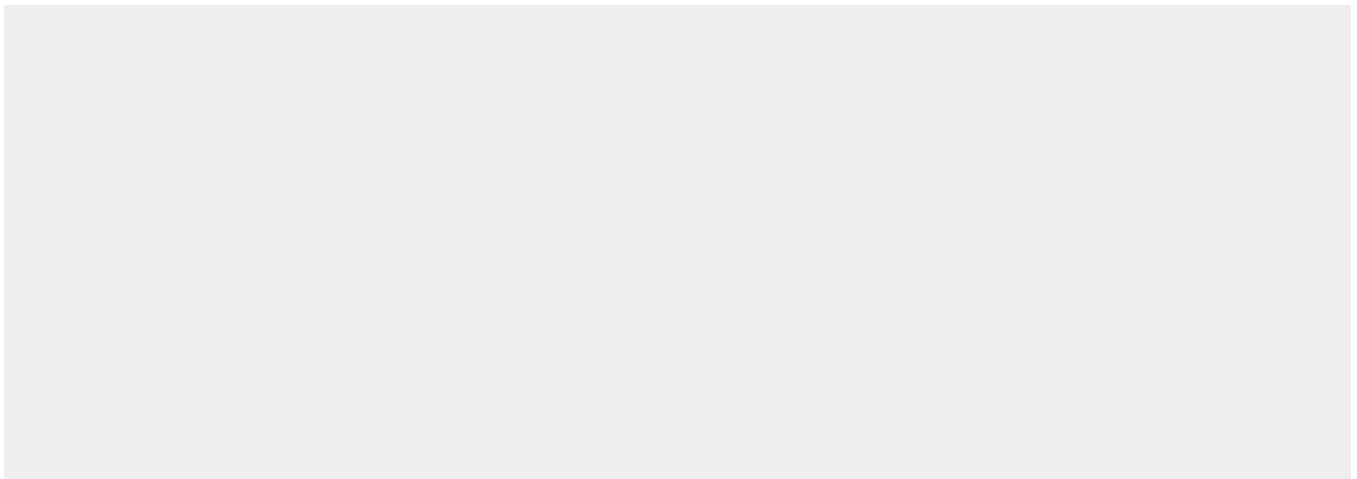
Abundant in heart and present at low levels in many other tissues

Anti-TIMP-4 Antibody - Protocols

Provided below are standard protocols that you may find useful for product applications.

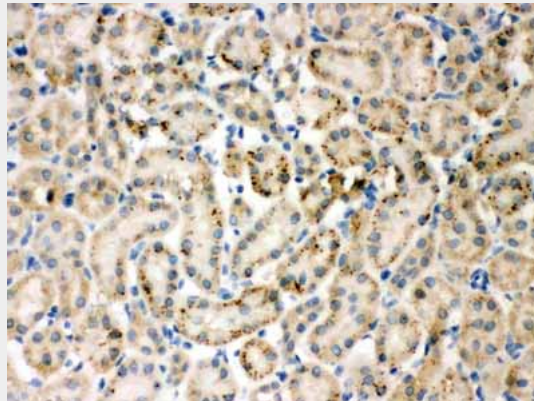
- [Western Blot](#)
- [Blocking Peptides](#)
- [Dot Blot](#)
- [Immunohistochemistry](#)
- [Immunofluorescence](#)
- [Immunoprecipitation](#)
- [Flow Cytometry](#)
- [Cell Culture](#)

Anti-TIMP-4 Antibody - Images

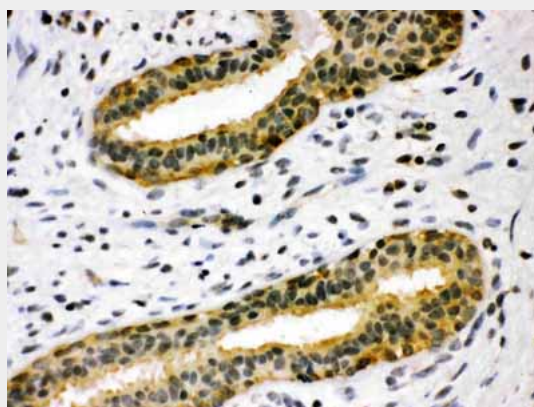




Anti-TIMP4 antibody, ABO10561, Western blotting All lanes: Anti TIMP4 (ABO10561) at 0.5ug/ml Lane 1: Rat Kidney Tissue Lysate at 50ug Lane 2: MCF-7 Whole Cell Lysate at 40ug Predicted bind size: 25KD Observed bind size: 25KD



Anti-TIMP4 antibody, ABO10561, IHC(P) IHC(P): Rat Kidney Tissue



Anti-TIMP4 antibody, ABO10561, IHC(P) IHC(P): Human Mammary Cancer Tissue

Anti-TIMP-4 Antibody - Background

Metalloproteinase inhibitor 4 is an enzyme that in humans is encoded by the TIMP4 gene. And this gene is mapped to chromosome 3p25. This gene belongs to the TIMP gene family. The proteins encoded by this gene family are inhibitors of the matrix metalloproteinases, a group of peptidases involved in degradation of the extracellular matrix. The secreted, netrin domain-containing protein

encoded by this gene is involved in regulation of platelet aggregation and recruitment and may play role in hormonal regulation and endometrial tissue remodeling.