

Anti-TIMP-3 Antibody
Catalog # ABO10560**Specification****Anti-TIMP-3 Antibody - Product Information**

Application	WB
Primary Accession	P35625
Host	Rabbit
Reactivity	Human, Mouse, Rat
Clonality	Polyclonal
Format	Lyophilized

Description

Rabbit IgG polyclonal antibody for Metalloproteinase inhibitor 3(TIMP3) detection. Tested with WB, ELISA in Human;Mouse;Rat.

Reconstitution

Add 0.2ml of distilled water will yield a concentration of 500ug/ml.

Anti-TIMP-3 Antibody - Additional Information

Gene ID 7078

Other Names

Metalloproteinase inhibitor 3, Protein MIG-5, Tissue inhibitor of metalloproteinases 3, TIMP-3, TIMP3

Calculated MW

24145 MW KDa

Application Details

ELISA , 0.1-0.5 µg/ml, Human, -
Western blot, 0.1-0.5 µg/ml, Human, Mouse, Rat

Subcellular Localization

Secreted, extracellular space, extracellular matrix.

Protein Name

Metalloproteinase inhibitor 3

Contents

Each vial contains 5mg BSA, 0.9mg NaCl, 0.2mg Na₂HPO₄, 0.05mg Thimerosal, 0.05mg NaN₃.

Immunogen

A synthetic peptide corresponding to a sequence at the C-terminus of human TIMP3(198-211aa WAPPDKSIINATDP), different from the related rat and mouse sequences by one amino acid.

Purification

Immunogen affinity purified.

Cross Reactivity

No cross reactivity with other proteins

Storage

At -20°C for one year. After reconstitution, at 4°C for one month. It can also be aliquotted and stored frozen at -20°C for a longer time. Avoid repeated freezing and thawing.

Sequence Similarities

Belongs to the protease inhibitor I35 (TIMP) family.

Anti-TIMP-3 Antibody - Protein Information

Name TIMP3

Function

Complexes with metalloproteinases (such as collagenases) and irreversibly inactivates them by binding to their catalytic zinc cofactor. May form part of a tissue-specific acute response to remodeling stimuli. Known to act on MMP-1, MMP-2, MMP-3, MMP-7, MMP-9, MMP-13, MMP-14 and MMP-15.

Cellular Location

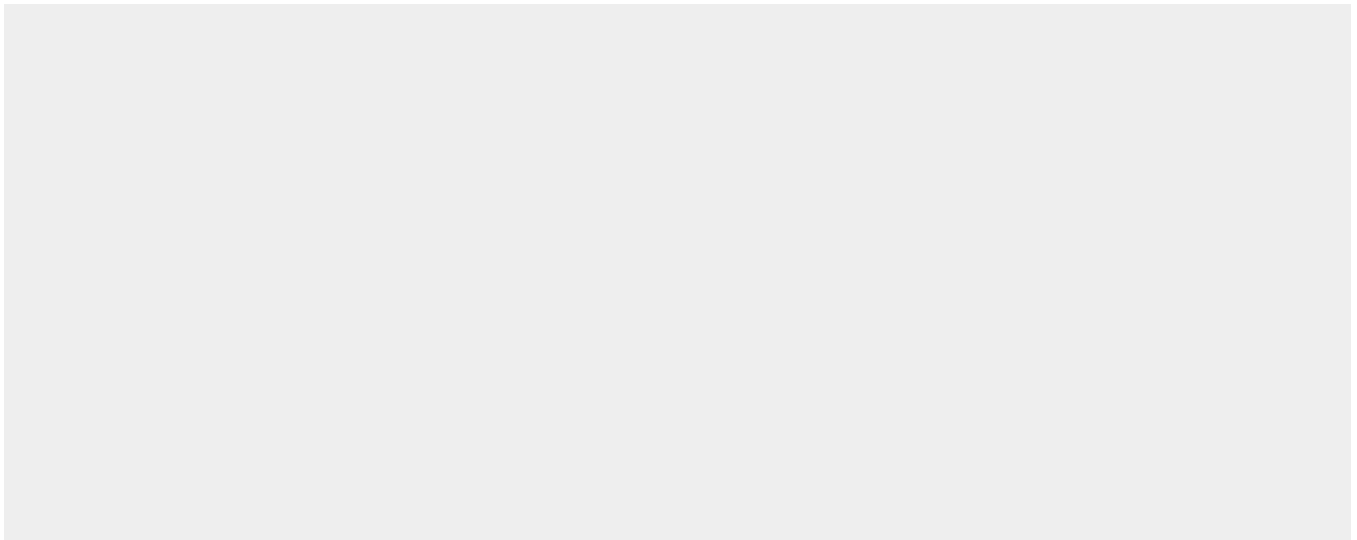
Secreted, extracellular space, extracellular matrix

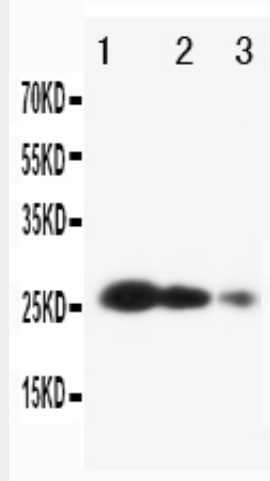
Anti-TIMP-3 Antibody - Protocols

Provided below are standard protocols that you may find useful for product applications.

- [Western Blot](#)
- [Blocking Peptides](#)
- [Dot Blot](#)
- [Immunohistochemistry](#)
- [Immunofluorescence](#)
- [Immunoprecipitation](#)
- [Flow Cytometry](#)
- [Cell Culture](#)

Anti-TIMP-3 Antibody - Images





Anti-TIMP3 antibody, ABO10560, Western blotting Lane 1: Recombinant Human TIMP3 Protein 10ng Lane 2: Recombinant Human TIMP3 Protein 5ng Lane 3: Recombinant Human TIMP3 Protein 2.5ng

Anti-TIMP-3 Antibody - Background

Metalloproteinase inhibitor 3 is a protein that in humans is encoded by the TIMP3 gene. It is mapped to 22q12.1-q13.2. This gene belongs to the tissue inhibitor of metalloproteinases gene family. The proteins encoded by this gene family are inhibitors of the matrix metalloproteinases, a group of peptidases involved in degradation of the extracellular matrix (ECM). Expression of this gene is induced in response to mitogenic stimulation and this netrin domain-containing protein is localized to the ECM. Mutations in this gene have been associated with the autosomal dominant disorder Sorsby's fundus dystrophy.