

**Anti-Sonic Hedgehog Antibody**  
Catalog # ABO10556

**Specification**

---

**Anti-Sonic Hedgehog Antibody - Product Information**

Application	WB, IHC
Primary Accession	<a href="#">Q15465</a>
Host	Rabbit
Reactivity	Human, Mouse, Rat
Clonality	Polyclonal
Format	Lyophilized

**Description**

Rabbit IgG polyclonal antibody for Sonic hedgehog protein(SHH) detection. Tested with WB, IHC-P in Human;Mouse;Rat.

**Reconstitution**

Add 0.2ml of distilled water will yield a concentration of 500ug/ml.

**Anti-Sonic Hedgehog Antibody - Additional Information**

**Gene ID** 6469

**Other Names**

Sonic hedgehog protein, SHH, HHG-1, Sonic hedgehog protein N-product, Sonic hedgehog protein C-product, SHH

**Calculated MW**

49607 MW KDa

**Application Details**

Immunohistochemistry(Paraffin-embedded Section), 0.5-1 µg/ml, Human, Rat, Mouse, By Heat<br>Western blot, 0.1-0.5 µg/ml, Human, Rat, Mouse<br>

**Subcellular Localization**

Sonic hedgehog protein C-product: Secreted, extracellular space . The C-terminal peptide diffuses from the cell. .

**Tissue Specificity**

Expressed in fetal intestine, liver, lung, and kidney. Not expressed in adult tissues.

**Protein Name**

Sonic hedgehog protein

**Contents**

Each vial contains 5mg BSA, 0.9mg NaCl, 0.2mg Na<sub>2</sub>HPO<sub>4</sub>, 0.05mg Thimerosal, 0.05mg NaN<sub>3</sub>.

**Immunogen**

A synthetic peptide corresponding to a sequence at the N-terminus of human Sonic Hedgehog(203-218aa ATVHLEQGGTKLVKDL), identical to the related rat and mouse sequences.

### Purification

Immunogen affinity purified.

### Cross Reactivity

No cross reactivity with other proteins

### Storage

**At -20°C for one year. After r°Constitution, at 4°C for one month. It°Can also be aliquotted and stored frozen at -20°C for a longer time.Avoid repeated freezing and thawing.**

### Sequence Similarities

Belongs to the hedgehog family.

## Anti-Sonic Hedgehog Antibody - Protein Information

Name SHH ([HGNC:10848](#))

### Function

[Sonic hedgehog protein]: The C-terminal part of the sonic hedgehog protein precursor displays an autoproteolysis and a cholesterol transferase activity (By similarity). Both activities result in the cleavage of the full-length protein into two parts (ShhN and ShhC) followed by the covalent attachment of a cholesterol moiety to the C-terminal of the newly generated ShhN (By similarity). Both activities occur in the reticulum endoplasmic (By similarity). Once cleaved, ShhC is degraded in the endoplasmic reticulum (By similarity).

### Cellular Location

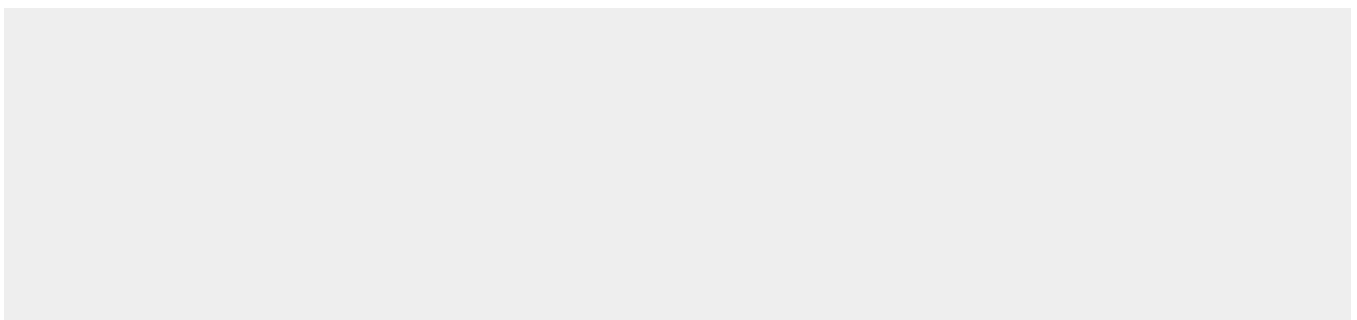
[Sonic hedgehog protein]: Endoplasmic reticulum membrane. Golgi apparatus membrane. Secreted Note=Co-localizes with HHAT in the ER and Golgi membrane

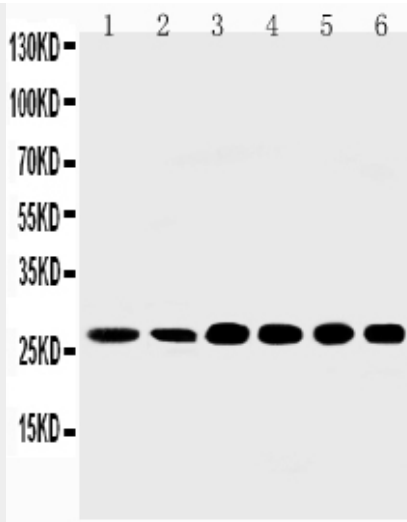
## Anti-Sonic Hedgehog Antibody - Protocols

Provided below are standard protocols that you may find useful for product applications.

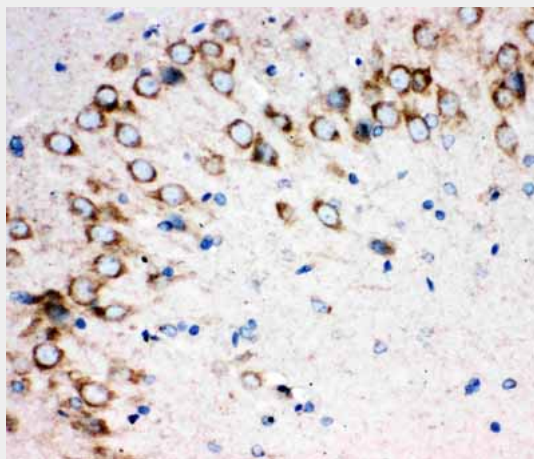
- [Western Blot](#)
- [Blocking Peptides](#)
- [Dot Blot](#)
- [Immunohistochemistry](#)
- [Immunofluorescence](#)
- [Immunoprecipitation](#)
- [Flow Cytometry](#)
- [Cell Culture](#)

## Anti-Sonic Hedgehog Antibody - Images

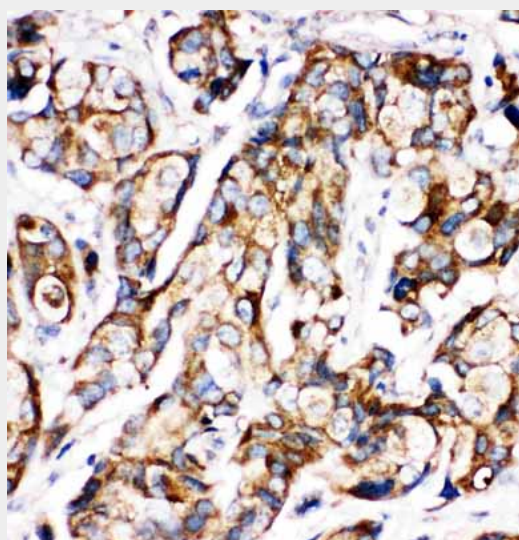




Anti-Sonic Hedgehog antibody, ABO10556, Western blotting  
Lane 1: Rat Liver Tissue Lysate  
Lane 2: Rat Intestine Tissue Lysate  
Lane 3: HELA Cell Lysate  
Lane 4: A549 Cell Lysate  
Lane 5: SMMC Cell Lysate  
Lane 6: MM231 Cell Lysate



Anti-Sonic Hedgehog antibody, ABO10556, IHC(P)  
IHC(P): Rat Brain Tissue



Anti-Sonic Hedgehog antibody, ABO10556, IHC(P)  
IHC(P): Human Mammary Tissue

### **Anti-Sonic Hedgehog Antibody - Background**

The mouse, chicken, and zebrafish Shh homologs are highly conserved. SHH expression was not detected in adult tissues examined. However, it was expressed in fetal intestine, liver, lung, and kidney. SHH gene is mapped to 7q. SHH mutations are not a frequent cause of isolated oral clefts.