

Anti-Calretinin Antibody
Catalog # ABO10510**Specification**

Anti-Calretinin Antibody - Product Information

Application	WB, IHC
Primary Accession	P22676
Host	Rabbit
Reactivity	Human, Mouse, Rat
Clonality	Polyclonal
Format	Liquid

Description

Rabbit IgG polyclonal antibody for Calretinin(CALB2) detection. Tested with WB, IHC-P in Human;Mouse;Rat.

Anti-Calretinin Antibody - Additional Information

Gene ID 794

Other Names

Calretinin, CR, 29 kDa calbindin, CALB2, CAB29

Calculated MW

31540 MW KDa

Application Details

Immunohistochemistry(Paraffin-embedded Section), 0.5-1 µg/ml, Human, Mouse, Rat, By Heat
Western blot, 0.1-0.5 µg/ml, Human, Mouse, Rat

Tissue Specificity

Brain.

Protein Name

Calretinin(CR)

Contents

Each vial contains 50% glycerol, 0.9mg NaCl, 0.2mg Na₂HPO₄. Carrier free (No BSA) form available in stock. If you want this antibody carrier free please specify "Carrier Free" or "No BSA" in your order note. "

Immunogen

A synthetic peptide corresponding to a sequence at the N-terminus of human Calretinin(4-18aa PQQPPYLHLAELTA), identical to the related rat sequence.

Purification

Immunogen affinity purified.

Cross Reactivity

No cross reactivity with other proteins

Storage

At -20°C for one year, at 4°C for one month. Avoid repeated freezing and thawing.

Sequence Similarities

Belongs to the calbindin family.

Anti-Calretinin Antibody - Protein Information

Name CALB2

Synonyms CAB29

Function

Calretinin is a calcium-binding protein which is abundant in auditory neurons.

Tissue Location

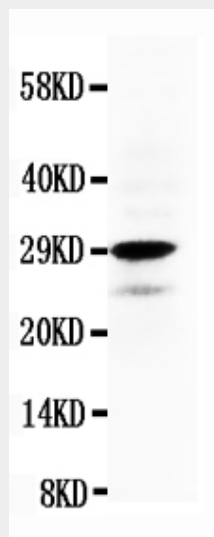
Brain.

Anti-Calretinin Antibody - Protocols

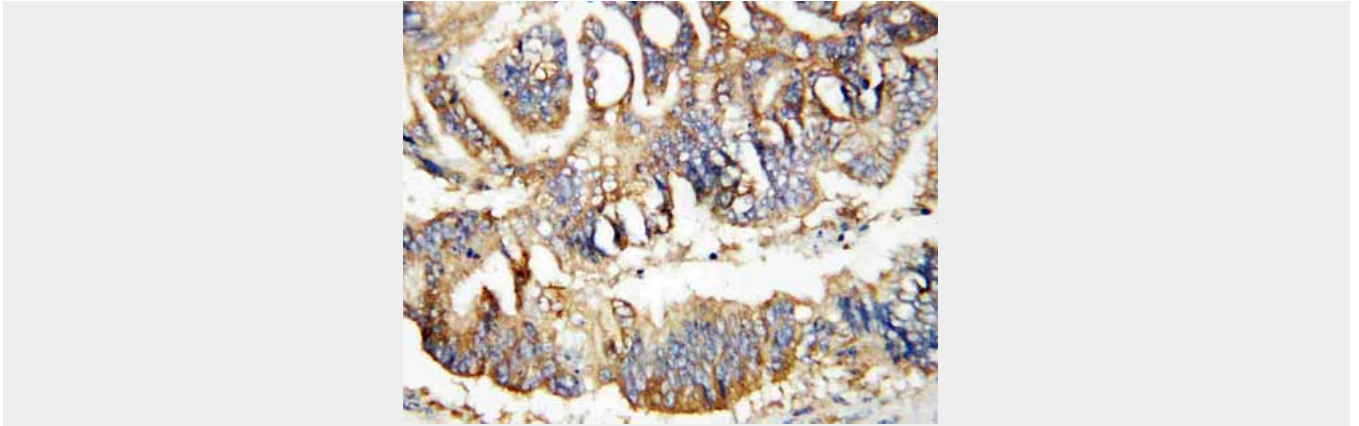
Provided below are standard protocols that you may find useful for product applications.

- [Western Blot](#)
- [Blocking Peptides](#)
- [Dot Blot](#)
- [Immunohistochemistry](#)
- [Immunofluorescence](#)
- [Immunoprecipitation](#)
- [Flow Cytometry](#)
- [Cell Culture](#)

Anti-Calretinin Antibody - Images



Anti-Calretinin antibody, ABO10510, Western blottingWB: HELA Cell Lysate



Anti-Calretinin antibody, ABO10510, IHC(P)IHC(P): Human Rectal Cancer Tissue

Anti-Calretinin Antibody - Background

Calbindin is a calcium-binding protein belonging to the troponin C superfamily. Calretinin is expressed in central and peripheral nervous system and in many normal and pathological tissues. The rat and human calretinin exhibit 98% sequence homology and 91% homology to many other species. Two calcium binding proteins, calbindin and calretinin, have been reported to be expressed in abundance in Purkinje cells and other cell types in the cerebellum.