

Anti-Apoptosis Inhibitor 5 Antibody Catalog # ABO10504

Specification

Anti-Apoptosis Inhibitor 5 Antibody - Product Information

Application	WB, IHC, ICC
Primary Accession	Q9BZZ5
Host	Rabbit
Reactivity	Human, Mouse, Rat
Clonality	Polyclonal
Format	Lyophilized

Description

Rabbit IgG polyclonal antibody for Apoptosis inhibitor 5(API5) detection. Tested with WB, IHC-P, IHC-F, ICC in Human;Mouse;Rat.

Reconstitution

Add 0.2ml of distilled water will yield a concentration of 500ug/ml.

Anti-Apoptosis Inhibitor 5 Antibody - Additional Information

Gene ID 8539

Other Names

Apoptosis inhibitor 5, API-5, Antiapoptosis clone 11 protein, AAC-11, Cell migration-inducing gene 8 protein, Fibroblast growth factor 2-interacting factor, FIF, Protein XAGL, API5

Calculated MW

59005 MW KDa

Application Details

Immunocytochemistry , 0.5-1 µg/ml, Human, Mouse
Immunohistochemistry(Frozen Section), 0.5-1 µg/ml, Rat, Human, Mouse
Immunohistochemistry(Paraffin-embedded Section), 0.5-1 µg/ml, Human, Mouse, Rat, By Heat
Western blot, 0.1-0.5 µg/ml, Human, Rat, Mouse

Subcellular Localization

Nucleus . Cytoplasm . Mainly nuclear. Can also be cytoplasmic.

Tissue Specificity

Expressed in all tissues tested, including heart, brain, placenta, lung, liver, skeletal muscle, kidney and pancreas. Highest levels in heart, pancreas and placenta. Highly expressed in several cancers. Preferentially expressed in squamous cell carcinoma versus adenocarcinoma in non-small cell lung cancer. .

Protein Name

Apoptosis inhibitor 5(API-5)

Contents

Each vial contains 5mg BSA, 0.9mg NaCl, 0.2mg Na₂HPO₄, 0.05mg Thimerosal, 0.05mg NaN₃.

Immunogen

A synthetic peptide corresponding to a sequence at the C-terminus of human Apoptosis inhibitor 5(487-504aa KYSSNLGNFNYSRSLQGK)(b), different from the related mouse sequence by one amino acid.

Purification

Immunogen affinity purified.

Cross Reactivity

No cross reactivity with other proteins

Storage

At -20°C for one year. After reconstitution, at 4°C for one month. It can also be aliquotted and stored frozen at -20°C for a longer time. Avoid repeated freezing and thawing.

Sequence Similarities

Belongs to the API5 family.

Anti-Apoptosis Inhibitor 5 Antibody - Protein Information

Name API5 ([HGNC:594](#))

Function

Antiapoptotic factor that may have a role in protein assembly. Negatively regulates ACIN1. By binding to ACIN1, it suppresses ACIN1 cleavage from CASP3 and ACIN1-mediated DNA fragmentation. Also known to efficiently suppress E2F1-induced apoptosis. Its depletion enhances the cytotoxic action of the chemotherapeutic drugs.

Cellular Location

Nucleus. Cytoplasm. Note=Mainly nuclear. Can also be cytoplasmic

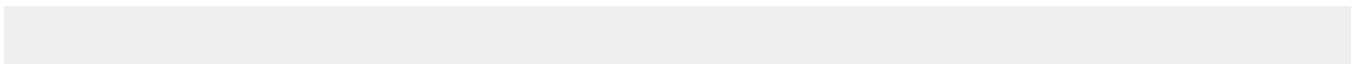
Tissue Location

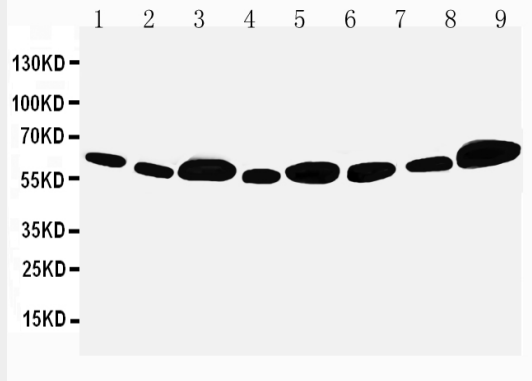
Expressed in all tissues tested, including heart, brain, placenta, lung, liver, skeletal muscle, kidney and pancreas Highest levels in heart, pancreas and placenta. Highly expressed in several cancers. Preferentially expressed in squamous cell carcinoma versus adenocarcinoma in non-small cell lung cancer

Anti-Apoptosis Inhibitor 5 Antibody - Protocols

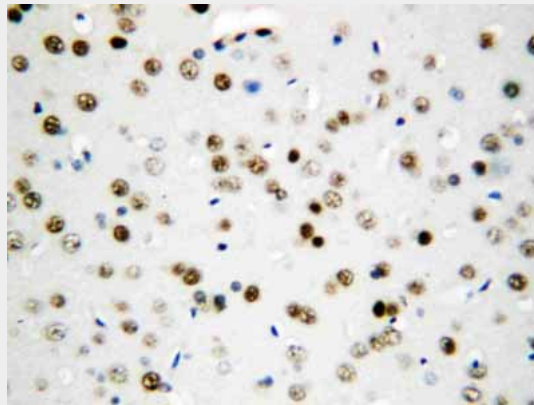
Provided below are standard protocols that you may find useful for product applications.

- [Western Blot](#)
- [Blocking Peptides](#)
- [Dot Blot](#)
- [Immunohistochemistry](#)
- [Immunofluorescence](#)
- [Immunoprecipitation](#)
- [Flow Cytometry](#)
- [Cell Culture](#)

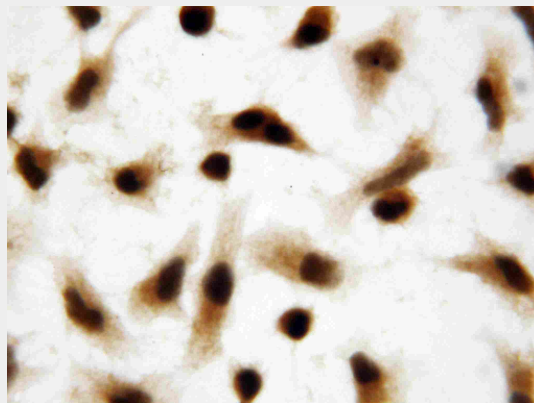
Anti-Apoptosis Inhibitor 5 Antibody - Images



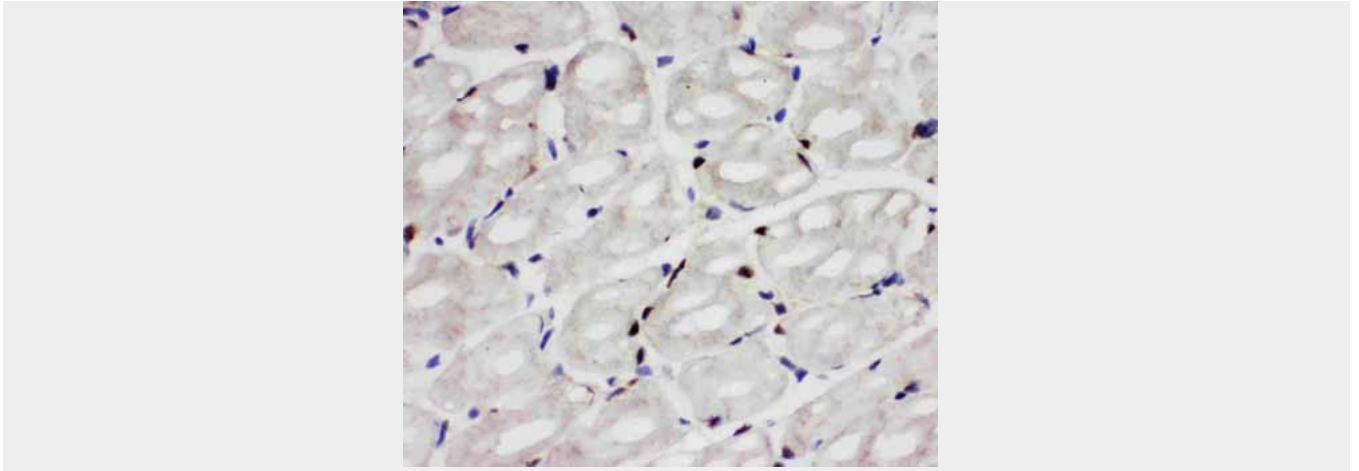
Anti-Apoptosis inhibitor 5 antibody, ABO10504, Western blotting
Lane 1: Rat Cardiac Muscle Tissue Lysate
Lane 2: Rat Brain Tissue Lysate
Lane 3: Rat Testis Tissue Lysate
Lane 4: Rat Placenta Tissue Lysate
Lane 5: MCF-7 Cell Lysate
Lane 6: HELA Cell Lysate
Lane 7: CEM Cell Lysate
Lane 8: SMMC Cell Lysate
Lane 9: COLO320 Cell Lysate



Anti-Apoptosis inhibitor 5 antibody, ABO10504, IHC(P)
IHC(P): Rat Brain Tissue



Anti-Apoptosis inhibitor 5 antibody, ABO10504, ICC
ICC: HELA Cell



Anti-Apoptosis inhibitor 5 antibody, ABO10504, IHC(F)IHC(F): Rat Cardiac Muscle Tissue

Anti-Apoptosis Inhibitor 5 Antibody - Background

Many growth factors and cytokines act as cellular survival factors by preventing programmed cell death (apoptosis). Apoptosis inhibitor 5 (API5) is an antiapoptotic factor which may have a role in protein assembly. The API5 gene is located on chromosome 11p12 based on an alignment of the API5 sequence with the genomic sequence. It is a critical determinant of E2F1-induced apoptosis, acting downstream of E2F to suppress E2F-dependent apoptosis without generally blocking E2F-dependent transcription.