

**Anti-ABI1 Antibody**  
Catalog # ABO10496**Specification****Anti-ABI1 Antibody - Product Information**

Application	WB, IHC
Primary Accession	<a href="#">Q8IZP0</a>
Host	Rabbit
Reactivity	Human, Mouse, Rat
Clonality	Polyclonal
Format	Lyophilized

**Description**

Rabbit IgG polyclonal antibody for Abl interactor 1(ABI1) detection. Tested with WB, IHC-P, ICC in Human;Mouse;Rat.

**Reconstitution**

Add 0.2ml of distilled water will yield a concentration of 500ug/ml.

**Anti-ABI1 Antibody - Additional Information**

**Gene ID** 10006

**Other Names**

Abl interactor 1, Abelson interactor 1, Abi-1, Abl-binding protein 4, AblBP4, Eps8 SH3 domain-binding protein, Eps8-binding protein, Nap1-binding protein, Nap1BP, Spectrin SH3 domain-binding protein 1, e3B1, ABI1, SSH3BP1

**Calculated MW**

55081 MW KDa

**Application Details**

Immunohistochemistry(Paraffin-embedded Section), 0.5-1 µg/ml, Human, Rat, Mouse, By Heat  
Heat  
Immunocytochemistry , 0.5-1 µg/ml, Human, -  
Western blot, 0.1-0.5 µg/ml, Human, Rat, Mouse

**Subcellular Localization**

Cytoplasm . Nucleus . Cell projection, lamellipodium . Cell projection, filopodium . Cell projection, growth cone . Cell junction, synapse, postsynaptic cell membrane, postsynaptic density . Cytoplasm, cytoskeleton . Localized to protruding lamellipodia and filopodia tips. Also localized to neuronal growth cones and synaptosomes. May shuttle from the postsynaptic densities to the nucleus (By similarity). .

**Tissue Specificity**

Widely expressed, with highest expression in brain. .

**Protein Name**

Abl interactor 1

**Contents**

Each vial contains 5mg BSA, 0.9mg NaCl, 0.2mg Na<sub>2</sub>HPO<sub>4</sub>, 0.05mg Thimerosal, 0.05mg NaN<sub>3</sub>.

### **Immunogen**

A synthetic peptide corresponding to a sequence at the C-terminus of human ABI1 (483-494aa WYEGVCNRVTGL), different from the related rat and mouse sequences by one amino acid.

### **Purification**

Immunogen affinity purified.

### **Cross Reactivity**

No cross reactivity with other proteins.

### **Storage**

**At -20°C for one year. After r°Constitution, at 4°C for one month. It°Can also be aliquotted and stored frozen at -20°C for a longer time.Avoid repeated freezing and thawing.**

## **Anti-ABI1 Antibody - Protein Information**

**Name** ABI1 ([HGNC:11320](#))

**Synonyms** SSH3BP1

### **Function**

May act in negative regulation of cell growth and transformation by interacting with nonreceptor tyrosine kinases ABL1 and/or ABL2. May play a role in regulation of EGF-induced Erk pathway activation. Involved in cytoskeletal reorganization and EGFR signaling. Together with EPS8 participates in transduction of signals from Ras to Rac. In vitro, a trimeric complex of ABI1, EPS8 and SOS1 exhibits Rac specific guanine nucleotide exchange factor (GEF) activity and ABI1 seems to act as an adapter in the complex. Regulates ABL1/c-Abl- mediated phosphorylation of ENAH. Recruits WASF1 to lamellipodia and there seems to regulate WASF1 protein level. In brain, seems to regulate the dendritic outgrowth and branching as well as to determine the shape and number of synaptic contacts of developing neurons.

### **Cellular Location**

Cytoplasm. Nucleus. Cell projection, lamellipodium. Cell projection, filopodium. Cell projection, growth cone Postsynaptic density. Cytoplasm, cytoskeleton. Note=Localized to protruding lamellipodia and filopodia tips. Also localized to neuronal growth cones and synaptosomes. May shuttle from the postsynaptic densities to the nucleus (By similarity)

### **Tissue Location**

Widely expressed, with highest expression in brain.

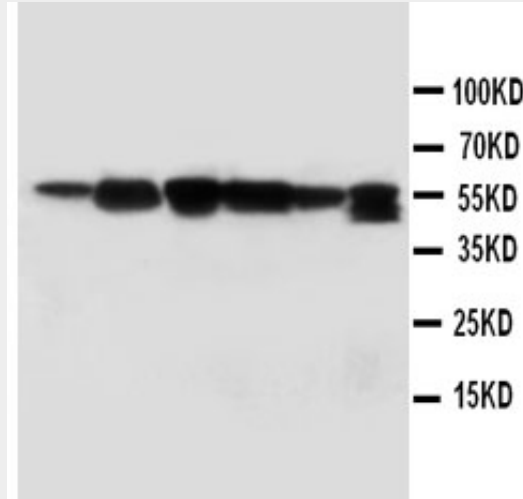
## **Anti-ABI1 Antibody - Protocols**

Provided below are standard protocols that you may find useful for product applications.

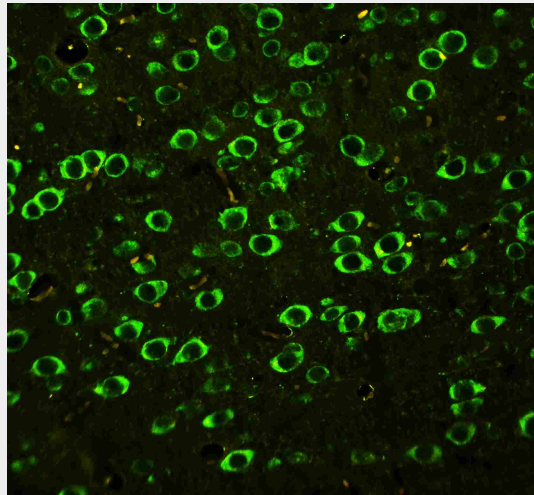
- [Western Blot](#)
- [Blocking Peptides](#)
- [Dot Blot](#)
- [Immunohistochemistry](#)
- [Immunofluorescence](#)
- [Immunoprecipitation](#)

- [Flow Cytometry](#)
- [Cell Culture](#)

### Anti-ABI1 Antibody - Images



Anti-ABI1 antibody, ABO10496, Western blotting Lane 1: Rat Liver Tissue Lysate Lane 2: Rat Brain Tissue Lysate Lane 3: MM231 Cell Lysate Lane 4: HELA Cell Lysate Lane 5: SMMC Cell Lysate Lane 6: JURKAT Cell Lysate



Anti-ABI1 antibody, ABO10496, IHC(P) IHC(P): Rat Brain Tissue

### Anti-ABI1 Antibody - Background

ABI1 is a human homolog of mouse Abl-interactor-1(Abi1), mapped on 10p11.2. ABI1 participates in the transduction of signals from Ras to Rac by regulating Rac-specific guanine nucleotide exchange factor(GEF) activities. ABI1 dramatically promoted ABL1-mediated tyrosine phosphorylation of MENA, but not of other substrates. Abi-1 regulates c-Abl-mediated phosphorylation of Mena by interacting with both proteins. ABI1 plays a role in the leukemogenesis by translocating to MLL.