

Anti-Beta-Tubulin Antibody (Monoclonal, TUB 2.1)
Catalog # ABO10492**Specification**

Anti-Beta-Tubulin Antibody (Monoclonal, TUB 2.1) - Product Information

Application	WB, IHC
Primary Accession	Q9H4B7
Host	Mouse
Isotype	Mouse IgG1
Reactivity	Human, Mouse, Rat
Clonality	Monoclonal
Format	Lyophilized

Description

Mouse IgG monoclonal antibody for beta-Tubulin detection. Tested with WB, IHC-P in Human,mouse,rat. No cross reactivity with other proteins.

Reconstitution

Add 1ml of PBS buffer will yield a concentration of 100ug/ml.

Anti-Beta-Tubulin Antibody (Monoclonal, TUB 2.1) - Additional Information

Gene ID 81027

Other Names

Tubulin beta-1 chain, TUBB1

Calculated MW

50327 MW KDa

Application Details

Immunohistochemistry(Paraffin-embedded Section), 0.5-1 µg/ml, Human, mouse, rat, By Heat

Western blot, 2 µg/ml, Human, mouse, rat

Subcellular Localization

Cytoplasm, cytoskeleton .

Tissue Specificity

Hematopoietic cell-specific. Major isotype in leukocytes, where it represents 50% of all beta-tubulins. .

Protein Name

Tubulin beta-1 chain

Contents

Mouse ascites fluid, 1.2% sodium acetate, 2mg BSA, with 0.01mg NaN3 as preservative.

Immunogen

Tubulin from rat brain.

Purification

Ascites

Cross Reactivity

No cross reactivity with other proteins

Storage

At -20°C for one year. After r°Constitution, at 4°C for one month. It°Can also be aliquotted and stored frozen at -20°C for a longer time.Avoid repeated freezing and thawing.

Anti-Beta-Tubulin Antibody (Monoclonal, TUB 2.1) - Protein Information

Name TUBB1

Function

Tubulin is the major constituent of microtubules, a cylinder consisting of laterally associated linear protofilaments composed of alpha- and beta-tubulin heterodimers. Microtubules grow by the addition of GTP-tubulin dimers to the microtubule end, where a stabilizing cap forms. Below the cap, tubulin dimers are in GDP-bound state, owing to GTPase activity of alpha-tubulin.

Cellular Location

Cytoplasm, cytoskeleton

Tissue Location

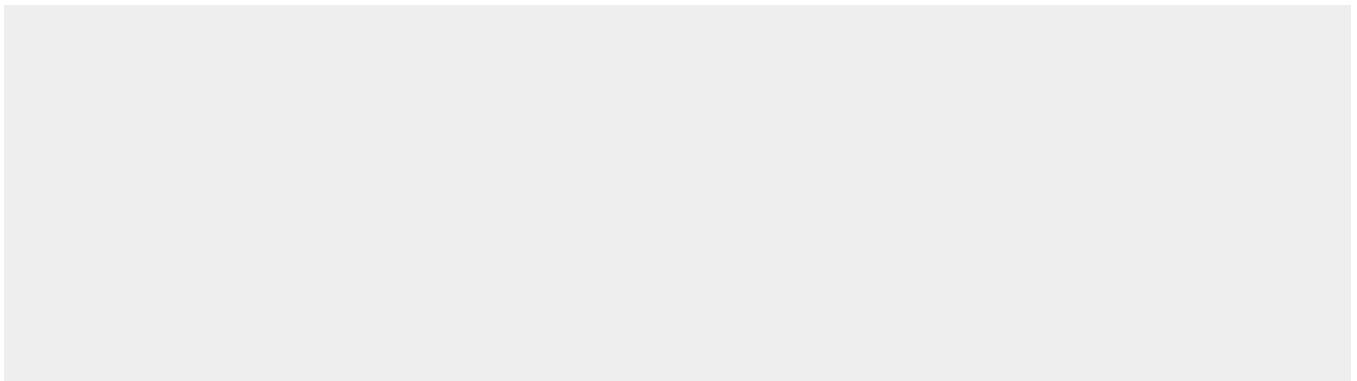
Hematopoietic cell-specific. Major isotype in leukocytes, where it represents 50% of all beta-tubulins

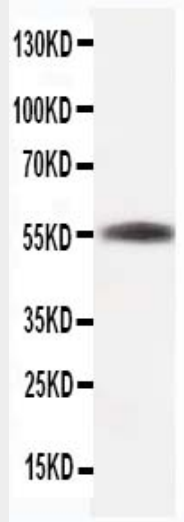
Anti-Beta-Tubulin Antibody (Monoclonal, TUB 2.1) - Protocols

Provided below are standard protocols that you may find useful for product applications.

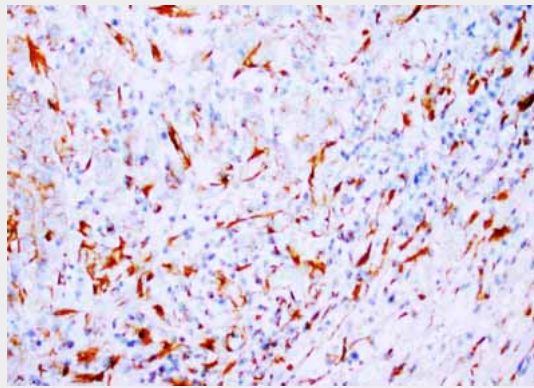
- [Western Blot](#)
- [Blocking Peptides](#)
- [Dot Blot](#)
- [Immunohistochemistry](#)
- [Immunofluorescence](#)
- [Immunoprecipitation](#)
- [Flow Cytometry](#)
- [Cell Culture](#)

Anti-Beta-Tubulin Antibody (Monoclonal, TUB 2.1) - Images





Anti-beta-Tubulin antibody (monoclonal), ABO10492, Western blottingWB: Rat Skeletal Muscle Tissue Lysate



Anti-beta-Tubulin antibody (monoclonal), ABO10492, IHC(P)IHC(P): Human Mammary Cancer Tissue

Anti-Beta-Tubulin Antibody (Monoclonal, TUB 2.1) - Background

Tubulin beta(TUBB) was derived from its corresponding mRNA with a molecular weight of about 55,000. TUBB gene contains 4 exons and located in the HLA class I region at 6p21.3. Paclitaxel resistance in non-small-cell lung cancer associated with beta-tubulin gene mutations.