

Anti-MAP1 Antibody (Monoclonal, HM-1)
Catalog # ABO10445

Specification

Anti-MAP1 Antibody (Monoclonal, HM-1) - Product Information

Application	IHC
Primary Accession	P34926
Host	Mouse
Isotype	Mouse IgG1
Reactivity	Mouse, Rat
Clonality	Monoclonal
Format	Lyophilized

Description

Mouse IgG monoclonal antibody for MAP1, microtubule-associated protein 1A (MAP1A) detection. Tested with WB, IHC-P, IHC-F in Mouse;rat. No cross reactivity with other proteins.

Reconstitution

Add 1ml of PBS buffer will yield a concentration of 100ug/ml.

Anti-MAP1 Antibody (Monoclonal, HM-1) - Additional Information

Gene ID 25152

Other Names

Microtubule-associated protein 1A, MAP-1A, MAP1A heavy chain, MAP1 light chain LC2, Map1a, Mtap1a

Calculated MW

299531 MW KDa

Application Details

Immunohistochemistry(Paraffin-embedded Section), 1-2 µg/ml, Mouse, rat, By Heat

Immunohistochemistry(Frozen Section), 1-2 µg/ml, Mouse, rat, -
Western blot, 0.5-2 µg/ml, Mouse, rat

Subcellular Localization

Cytoplasm, cytoskeleton .

Tissue Specificity

Brain, heart and muscle.

Protein Name

Microtubule-associated protein 1A

Contents

Mouse ascites fluid, 1.2% sodium acetate, 2mg BSA, with 0.01mg NaN3 as preservative.

Immunogen

Rat brain microtubule-associated proteins(MAPs).

Purification

Ascites

Cross Reactivity

No cross reactivity with other proteins

Storage

At -20°C for one year. After r°Constitution, at 4°C for one month. It°Can also be aliquotted and stored frozen at -20°C for a longer time.Avoid repeated freezing and thawing.

Anti-MAP1 Antibody (Monoclonal, HM-1) - Protein Information

Name Map1a

Synonyms Mtap1a

Function

Structural protein involved in the filamentous cross-bridging between microtubules and other skeletal elements.

Cellular Location

Cytoplasm, cytoskeleton.

Tissue Location

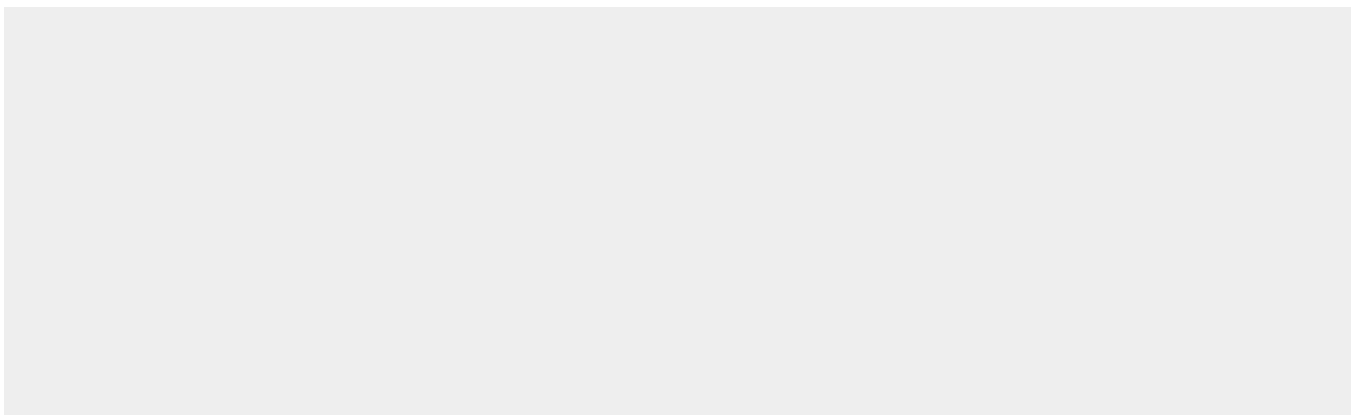
Brain, heart and muscle.

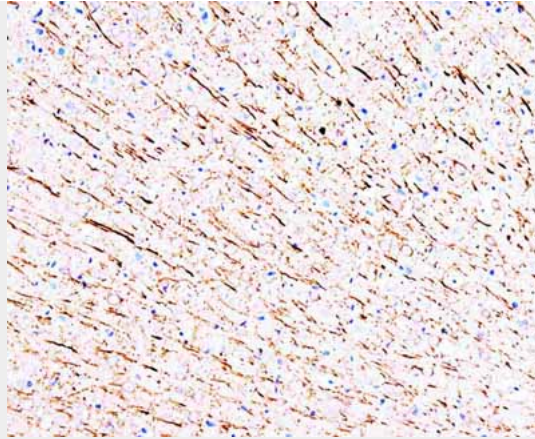
Anti-MAP1 Antibody (Monoclonal, HM-1) - Protocols

Provided below are standard protocols that you may find useful for product applications.

- [Western Blot](#)
- [Blocking Peptides](#)
- [Dot Blot](#)
- [Immunohistochemistry](#)
- [Immunofluorescence](#)
- [Immunoprecipitation](#)
- [Flow Cytometry](#)
- [Cell Culture](#)

Anti-MAP1 Antibody (Monoclonal, HM-1) - Images





Anti-MAP1 antibody (monoclonal), ABO10445, IHC(P)IHC(P): Rat Brain Tissue

Anti-MAP1 Antibody (Monoclonal, HM-1) - Background

Microtubules are the ubiquitous cytoskeletal structural components that are involved in intracellular transport. They are composed of tubulin and microtubule-associated proteins (MAPs). MAP1 is one of the major neuronal MAPs as well as being the largest (350KD). MAPs include MAP1A, MAP1B, and MAP2. MAP1a is a single-copy gene spanning 10.5 kb. MAP1a coding sequence is contained in five exons. MAP1B is encoded as a polyprotein that is processed to form a complex N-terminal microtubule-binding domain.