

Anti-Cytokeratin Peptide 18 Antibody (Monoclonal, CY-90)
Catalog # ABO10420

Specification

Anti-Cytokeratin Peptide 18 Antibody (Monoclonal, CY-90) - Product Information

Application	WB, IHC
Primary Accession	Q5BJY9
Host	Mouse
Isotype	Mouse IgG1
Reactivity	Human, Rat
Clonality	Monoclonal
Format	Lyophilized

Description

Mouse IgG monoclonal antibody for Cytokeratin Peptide 18, keratin 18 (KRT18) detection. Tested with WB, IHC-P, IHC-F in Human; rat. No cross reactivity with other proteins.

Reconstitution

Add 1ml of PBS buffer will yield a concentration of 100ug/ml.

Anti-Cytokeratin Peptide 18 Antibody (Monoclonal, CY-90) - Additional Information

Gene ID 294853

Other Names

Keratin, type I cytoskeletal 18, Cytokeratin-18, CK-18, Keratin-18, K18, Krt18
{ECO:0000250|UniProtKB:P05783}

Calculated MW

47761 MW KDa

Application Details

Immunohistochemistry(Paraffin-embedded Section), 1-2 µg/ml, Human, rat, By Heat

Immunohistochemistry(Frozen Section), 0.5-2 µg/ml, Human, rat, -
Western blot, 0.5-1 µg/ml, Human, rat

Subcellular Localization

Nucleus matrix . Nucleus, nucleolus . Cytoplasm .

Tissue Specificity

Expressed on the plasma membrane of hepatocytes and in the narrow apical portions of supporting cells in the vomeronasal sensory epithelium. Detected in the type III alveolar cells of the lung, in the proliferative crypt epithelium of the small intestine and in the older intragemmal cells of the tongue. .

Protein Name

Keratin, type I cytoskeletal 18

Contents

Mouse ascites fluid, 1.2% sodium acetate, 2mg BSA, with 0.01mg NaN3 as preservative.

Immunogen

The human epidermal carcinoma A-431 and MCF-7 human breast cancer cell lines.

Purification

Ascites

Cross Reactivity

No cross reactivity with other proteins

Storage

At -20°C for one year. After reconstitution, at 4°C for one month. It can also be aliquotted and stored frozen at -20°C for a longer time. Avoid repeated freezing and thawing.

Sequence Similarities

Belongs to the intermediate filament family.

Anti-Cytokeratin Peptide 18 Antibody (Monoclonal, CY-90) - Protein Information

Name Krt18 {ECO:0000250|UniProtKB:P05783}

Function

When phosphorylated, plays a role in filament reorganization. Involved in the delivery of mutated CFTR to the plasma membrane. Together with KRT8, is involved in interleukin-6 (IL-6)-mediated barrier protection (By similarity). Involved in the uptake of thrombin- antithrombin complexes by hepatic cells.

Cellular Location

Nucleus matrix. Cytoplasm, perinuclear region {ECO:0000250|UniProtKB:P05783}. Nucleus, nucleolus {ECO:0000250|UniProtKB:P05783}. Cytoplasm

Tissue Location

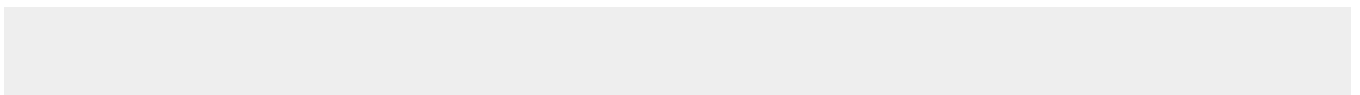
Expressed on the plasma membrane of hepatocytes and in the narrow apical portions of supporting cells in the vomeronasal sensory epithelium. Detected in the type III alveolar cells of the lung, in the proliferative crypt epithelium of the small intestine and in the older intragemmal cells of the tongue

Anti-Cytokeratin Peptide 18 Antibody (Monoclonal, CY-90) - Protocols

Provided below are standard protocols that you may find useful for product applications.

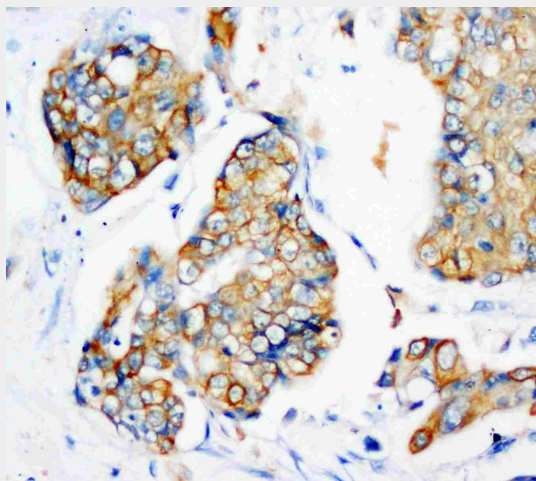
- [Western Blot](#)
- [Blocking Peptides](#)
- [Dot Blot](#)
- [Immunohistochemistry](#)
- [Immunofluorescence](#)
- [Immunoprecipitation](#)
- [Flow Cytometry](#)
- [Cell Culture](#)

Anti-Cytokeratin Peptide 18 Antibody (Monoclonal, CY-90) - Images

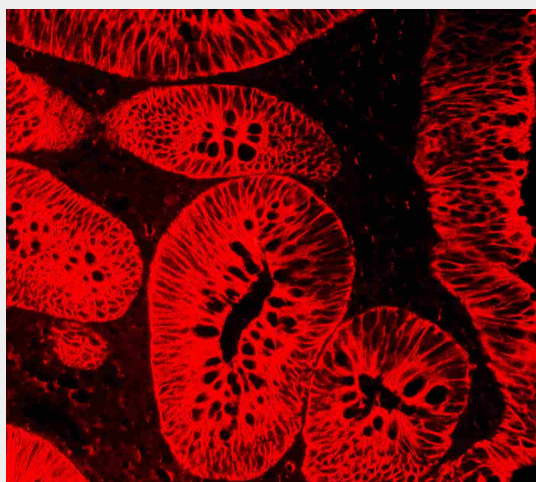




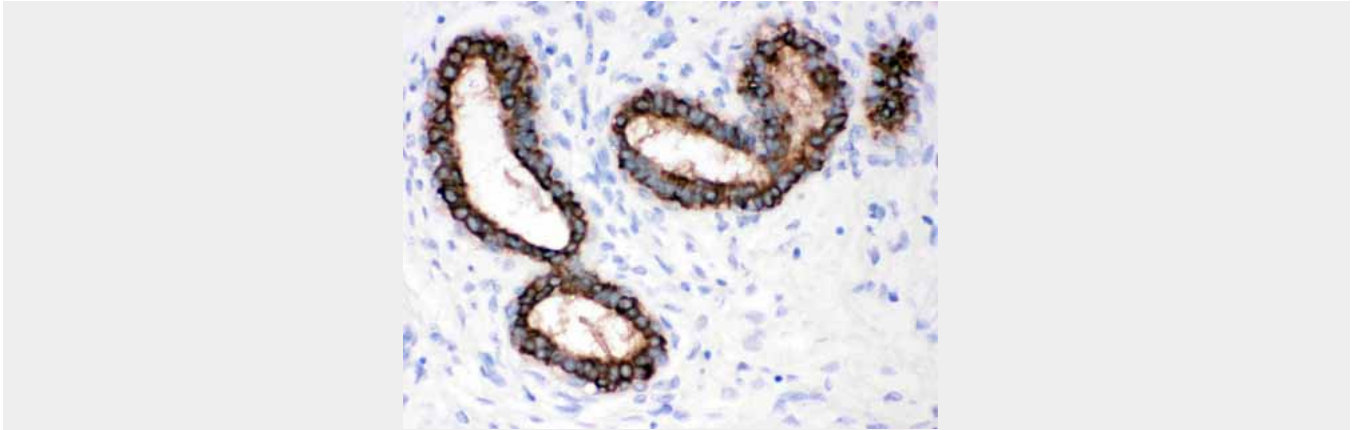
Anti-Cytokeratin Peptide 18 antibody (monoclonal), ABO10420, Western blottingWB: MCF-7 Cell Lysate



Anti-Cytokeratin Peptide 18 antibody (monoclonal), ABO10420, IHC(P)IHC(P): Human Mammary Cancer Tissue



Anti-Cytokeratin Peptide 18 antibody (monoclonal), ABO10420, IHC(P)IHC(P): Human Rectal Cancer Tissue



Anti-Cytokeratin Peptide 18 antibody (monoclonal), ABO10420, IHC(P)IHC(P): Human Mammary Cancer Tissue

Anti-Cytokeratin Peptide 18 Antibody (Monoclonal, CY-90) - Background

Intermediate filaments(IFs) are a structurally related family of cellular proteins that appear to be intimately involved with the cytoskeleton. Human keratin 18(KRT18) and the homologous mouse Endo B are type I IF protein subunits whose expression is restricted in adults to a variety of simple epithelial tissues. The KRT18 gene is 3,791 bp long and the keratin 18 protein is coded for by 7 exons. The K18 gene is 3791 bp in length and the K18 protein is coded for by seven exons. By Southern blotting using the genomic DNA PCR product, the gene for keratin 18 is assigned to chromosome 12. Mutation of human keratin 18 in association with cryptogenic cirrhosis.