

Anti-Calbindin-D Antibody (Monoclonal, CB-955)
Catalog # ABO10402**Specification****Anti-Calbindin-D Antibody (Monoclonal, CB-955) - Product Information**

Application	WB, IHC
Primary Accession	P07171
Host	Mouse
Isotype	Mouse IgG1
Reactivity	Human, Mouse, Rat
Clonality	Monoclonal
Format	Lyophilized

Description

Mouse IgG monoclonal antibody for Calbindin-D, calbindin 1, 28kDa (CALB1) detection. Tested with WB, IHC-P in Human;mouse;rat;bovine. No cross reactivity with other proteins.

Reconstitution

Add 1ml of PBS buffer will yield a concentration of 100ug/ml.

Anti-Calbindin-D Antibody (Monoclonal, CB-955) - Additional Information

Gene ID 83839

Other Names

Calbindin, Calbindin D28, D-28K, Spot 35 protein, Vitamin D-dependent calcium-binding protein, avian-type, Calb1

Calculated MW

29994 MW KDa

Application Details

Immunohistochemistry(Paraffin-embedded Section), 1-2 µg/ml, Human, bovine, mouse, rat, By Heat
Western blot, 0.5-1 µg/ml, Human, bovine, mouse, rat

Protein Name

Calbindin

Contents

Mouse ascites fluid, 1.2% sodium acetate, 2mg BSA, with 0.01mg NaN₃ as preservative.

Immunogen

Bovine kidney calbindin-D

Purification

Ascites

Cross Reactivity

No cross reactivity with other proteins

Storage

At -20°C for one year. After r°Constitution, at 4°C for one month. It°Can also be aliquotted and stored frozen at -20°C for a longer time.Avoid repeated freezing and thawing.

Sequence Similarities

Belongs to the calbindin family.

Anti-Calbindin-D Antibody (Monoclonal, CB-955) - Protein Information

Name Calb1

Function

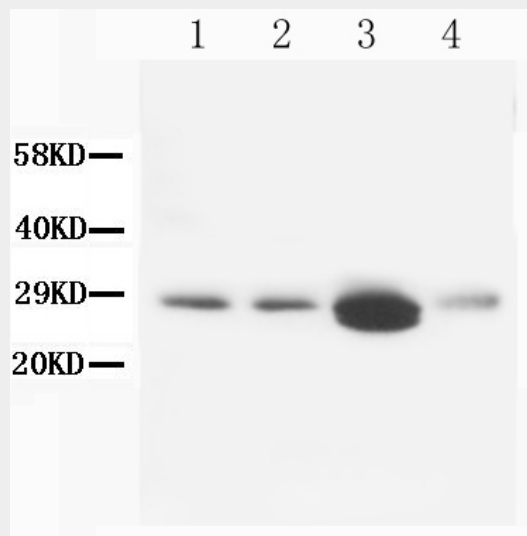
Buffers cytosolic calcium. May stimulate a membrane Ca(2+)- ATPase and a 3',5'-cyclic nucleotide phosphodiesterase.

Anti-Calbindin-D Antibody (Monoclonal, CB-955) - Protocols

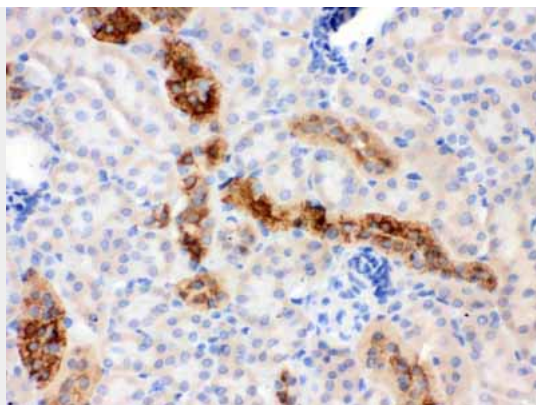
Provided below are standard protocols that you may find useful for product applications.

- [Western Blot](#)
- [Blocking Peptides](#)
- [Dot Blot](#)
- [Immunohistochemistry](#)
- [Immunofluorescence](#)
- [Immunoprecipitation](#)
- [Flow Cytometry](#)
- [Cell Culture](#)

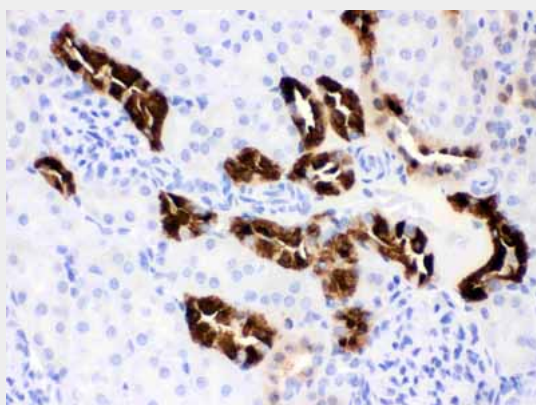
Anti-Calbindin-D Antibody (Monoclonal, CB-955) - Images



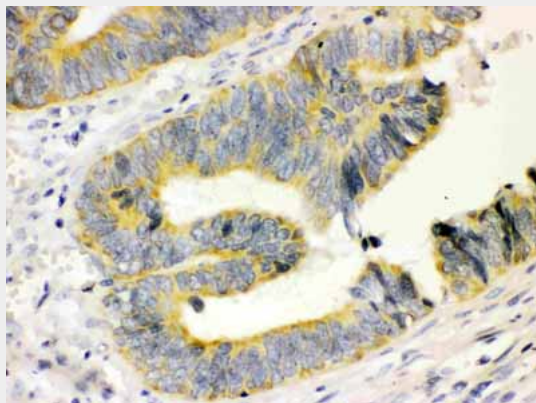
Anti-Calbindin-D antibody (monoclonal), ABO10402, Western blotting
Lane 1: Rat Brain Tissue Lysate
Lane 2: Rat Brain Tissue Lysate
Lane 3: Rat Kidney Tissue Lysate
Lane 4: Rat Lung Tissue Lysate



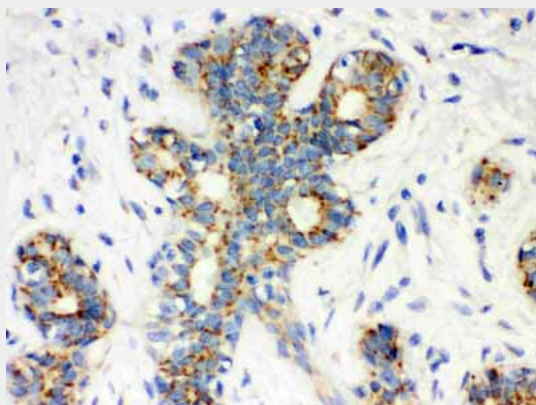
Anti-Calbindin-D antibody (monoclonal), ABO10402, IHC(P)IHC(P): Mouse Kidney Tissue



Anti-Calbindin-D antibody (monoclonal), ABO10402, IHC(P)IHC(P): Rat Kidney Tissue



Anti-Calbindin-D antibody (monoclonal), ABO10402, IHC(P)IHC(P): Human Intestinal Cancer Tissue



Anti-Calbindin-D antibody (monoclonal), ABO10402, IHC(P)IHC(P): Human Mammary Cancer Tissue

Anti-Calbindin-D Antibody (Monoclonal, CB-955) - Background

The human calbindin D28k(CALB1) is a calcium-binding protein belonging to the troponin C superfamily. It was originally described as a 27-kD protein induced by vitamin D in the duodenum of the chick. Parmentier et al.(1991) mapped the CALB1 gene to 8q21.3-q22.1 by in situ hybridization.