

**Anti-ANGPTL2 Picoband Antibody**  
Catalog # ABO10322

**Specification**

---

**Anti-ANGPTL2 Picoband Antibody - Product Information**

Application	WB, IHC
Primary Accession	<a href="#">O9UKU9</a>
Host	Rabbit
Reactivity	Human, Mouse, Rat
Clonality	Polyclonal
Format	Lyophilized

**Description**

Rabbit IgG polyclonal antibody for Angiotensin-converting enzyme 2 (ACE2) detection. Tested with WB, IHC-P in Human;Mouse;Rat.

**Reconstitution**

Add 0.2ml of distilled water will yield a concentration of 500ug/ml.

**Anti-ANGPTL2 Picoband Antibody - Additional Information**

**Gene ID** 23452

**Other Names**

Angiotensin-converting enzyme 2, Angiotensin-like protein 2, ANGPTL2, ARP2

**Calculated MW**

57104 MW KDa

**Application Details**

Immunohistochemistry(Paraffin-embedded Section), 0.5-1 µg/ml, Human, Mouse, Rat, By Heat  
Western blot, 0.1-0.5 µg/ml, Mouse, Rat, Human

**Subcellular Localization**

Secreted.

**Tissue Specificity**

Widely expressed in heart, small intestine, spleen and stomach. Also found in lower levels in colon, ovary, adrenal gland, skeletal muscle and in prostate.

**Protein Name**

Angiotensin-converting enzyme 2

**Contents**

Each vial contains 5mg BSA, 0.9mg NaCl, 0.2mg Na<sub>2</sub>HPO<sub>4</sub>, 0.05mg Na<sub>3</sub>N.

**Immunogen**

A synthetic peptide corresponding to a sequence in the middle region of human ANGPTL2 (275-312aa WRDCLQALEDGHDTSSIYLVKPEENTNRLMQVWCDQRHD), different from the related mouse sequence by one amino acid.

**Purification**

Immunogen affinity purified.

**Cross Reactivity**

No cross reactivity with other proteins

**Storage**

**At -20°C for one year. After reconstitution, at 4°C for one month. It can also be aliquotted and stored frozen at -20°C for a longer time. Avoid repeated freezing and thawing.**

**Anti-ANGPTL2 Picoband Antibody - Protein Information**

**Name** ANGPTL2

**Synonyms** ARP2

**Function**

Induces sprouting in endothelial cells through an autocrine and paracrine action.

**Cellular Location**

Secreted.

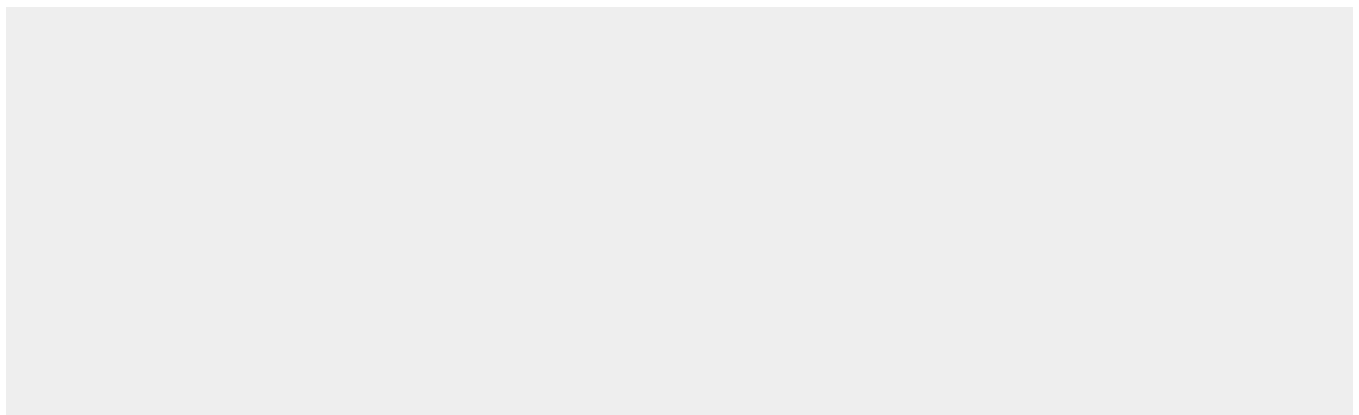
**Tissue Location**

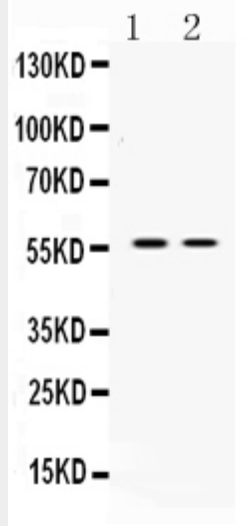
Widely expressed in heart, small intestine, spleen and stomach. Also found in lower levels in colon, ovary, adrenal gland, skeletal muscle and in prostate

**Anti-ANGPTL2 Picoband Antibody - Protocols**

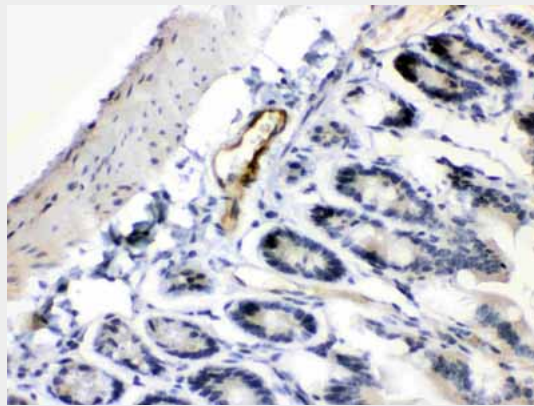
Provided below are standard protocols that you may find useful for product applications.

- [Western Blot](#)
- [Blocking Peptides](#)
- [Dot Blot](#)
- [Immunohistochemistry](#)
- [Immunofluorescence](#)
- [Immunoprecipitation](#)
- [Flow Cytometry](#)
- [Cell Culture](#)

**Anti-ANGPTL2 Picoband Antibody - Images**



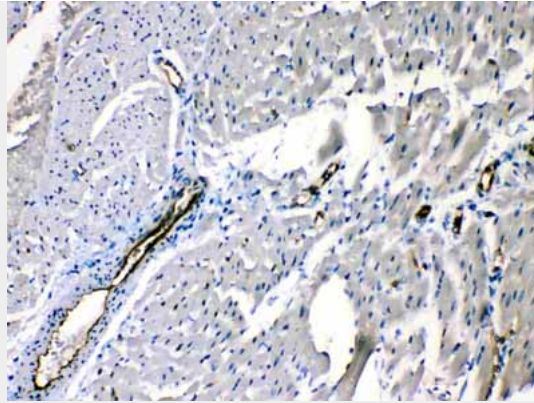
Western blot analysis of ANGPTL2 expression in rat stomach extract (lane 1) and mouse ovary extract (lane 2). ANGPTL2 at 57KD was detected using rabbit anti- ANGPTL2 Antigen Affinity purified polyclonal antibody (Catalog # ABO10322) at 0.5  $\mu$ g/mL. The blot was developed using chemiluminescence (ECL) method .



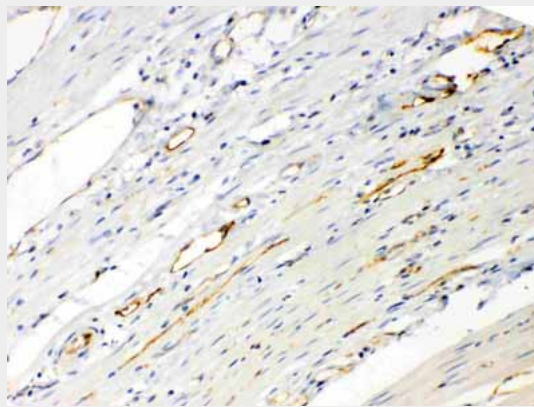
ANGPTL2 was detected in paraffin-embedded sections of mouse intestine tissues using rabbit anti- ANGPTL2 Antigen Affinity purified polyclonal antibody (Catalog # ABO10322) at 1  $\mu$ g/mL. The immunohistochemical section was developed using SABC method .



ANGPTL2 was detected in paraffin-embedded sections of rat intestine tissues using rabbit anti-ANGPTL2 Antigen Affinity purified polyclonal antibody (Catalog # ABO10322) at 1  $\mu$ g/mL. The immunohistochemical section was developed using SABC method .



ANGPTL2 was detected in paraffin-embedded sections of rat cardiac muscle tissues using rabbit anti- ANGPTL2 Antigen Affinity purified polyclonal antibody (Catalog # ABO10322) at 1  $\mu$ g/mL. The immunohistochemical section was developed using SABC method .



ANGPTL2 was detected in paraffin-embedded sections of human intestinal cancer tissues using rabbit anti- ANGPTL2 Antigen Affinity purified polyclonal antibody (Catalog # ABO10322) at 1  $\mu$ g/mL. The immunohistochemical section was developed using SABC method .

#### **Anti-ANGPTL2 Picoband Antibody - Background**

Angiopoietin-related protein 2, also known as angiopoietin-like protein 2, is a protein that in humans is encoded by the ANGPTL2 gene. Angiopoietins are members of the vascular endothelial growth factor family and the only known growth factors largely specific for vascular endothelium. Angiopoietin-1, angiopoietin-2, and angiopoietin-4 participate in the formation of blood vessels. ANGPTL2 protein is a secreted glycoprotein with homology to the angiopoietins and may exert a function on endothelial cells through autocrine or paracrine action.