

**Anti-Dishevelled 3 Picoband Antibody**  
Catalog # ABO10292**Specification**

---

**Anti-Dishevelled 3 Picoband Antibody - Product Information**

Application	WB
Primary Accession	<a href="#">Q92997</a>
Host	Rabbit
Reactivity	Human, Mouse, Rat
Clonality	Polyclonal
Format	Lyophilized

**Description**

Rabbit IgG polyclonal antibody for Segment polarity protein dishevelled homolog DVL-3(DVL3) detection. Tested with WB in Human;Mouse;Rat.

**Reconstitution**

Add 0.2ml of distilled water will yield a concentration of 500ug/ml.

**Anti-Dishevelled 3 Picoband Antibody - Additional Information**

**Gene ID** 1857

**Other Names**

Segment polarity protein dishevelled homolog DVL-3, Dishevelled-3, DSH homolog 3, DVL3, KIAA0208

**Calculated MW**

78055 MW KDa

**Application Details**

Western blot, 0.1-0.5 µg/ml, Mouse, Rat, Human<br>

**Subcellular Localization**

Cytoplasm .

**Protein Name**

Segment polarity protein dishevelled homolog DVL-3

**Contents**

Each vial contains 5mg BSA, 0.9mg NaCl, 0.2mg Na<sub>2</sub>HPO<sub>4</sub>, 0.05mg NaN<sub>3</sub>.

**Immunogen**

A synthetic peptide corresponding to a sequence in the middle region of human Dishevelled 3 (397-434aa DTERLDDFHLSIHSDMAAIVKAMASPESGLEVRDRMW L), identical to the related mouse sequence.

**Purification**

Immunogen affinity purified.

### Cross Reactivity

No cross reactivity with other proteins.

### Storage

At -20°C for one year. After reconstitution, at 4°C for one month. It can also be aliquotted and stored frozen at -20°C for a longer time. Avoid repeated freezing and thawing.

## Anti-Dishevelled 3 Picoband Antibody - Protein Information

**Name** DVL3

**Synonyms** KIAA0208

### Function

Involved in the signal transduction pathway mediated by multiple Wnt genes.

### Cellular Location

Cytoplasm {ECO:0000250|UniProtKB:O14641}.

## Anti-Dishevelled 3 Picoband Antibody - Protocols

Provided below are standard protocols that you may find useful for product applications.

- [Western Blot](#)
- [Blocking Peptides](#)
- [Dot Blot](#)
- [Immunohistochemistry](#)
- [Immunofluorescence](#)
- [Immunoprecipitation](#)
- [Flow Cytometry](#)
- [Cell Culture](#)

## Anti-Dishevelled 3 Picoband Antibody - Images

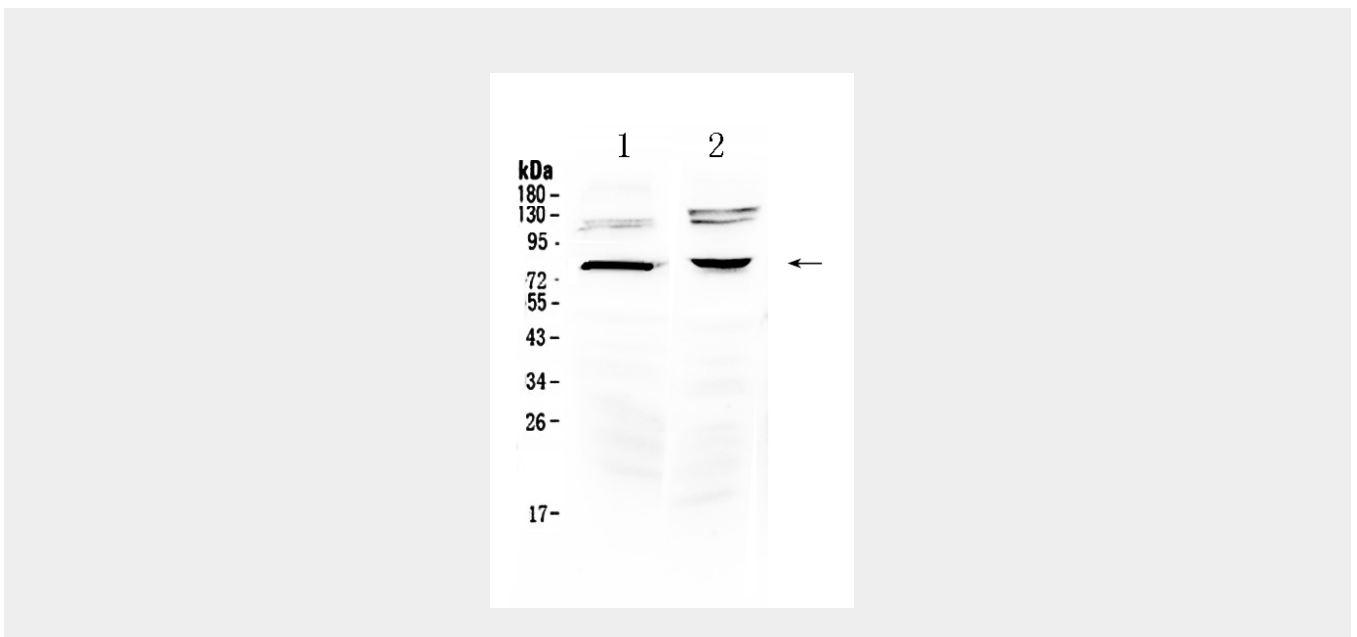


Figure 1. Western blot analysis of Dishevelled 3 using anti- Dishevelled 3 antibody (ABO10292). Electrophoresis was performed on a 5-20% SDS-PAGE gel at 70V (Stacking gel) / 90V (Resolving gel) for 2-3 hours. The sample well of each lane was loaded with 50ug of sample under reducing conditions. Lane 1: rat brain tissue lysates, Lane 2: mouse brain tissue lysates. After Electrophoresis, proteins were transferred to a Nitrocellulose membrane at 150mA for 50-90 minutes. Blocked the membrane with 5% Non-fat Milk/ TBS for 1.5 hour at RT. The membrane was incubated with rabbit anti- Dishevelled 3 antigen affinity purified polyclonal antibody (Catalog # ABO10292) at 0.5 µg/mL overnight at 4°C, then washed with TBS-0.1%Tween 3 times with 5 minutes each and probed with a goat anti-rabbit IgG-HRP secondary antibody at a dilution of 1:10000 for 1.5 hour at RT. The signal is developed using an Enhanced Chemiluminescent detection (ECL) kit with Tanon 5200 system. A specific band was detected for Dishevelled 3 at approximately 78KD. The expected band size for Dishevelled 3 is at 78KD.

### **Anti-Dishevelled 3 Picoband Antibody - Background**

Segment polarity protein dishevelled homolog DVL-3 is a protein that in humans is encoded by the DVL3 gene. It is mapped to 3q27.1. This gene is a member of a multi-gene family which shares strong similarity with the Drosophila dishevelled gene, dsh. The Drosophila dishevelled gene encodes a cytoplasmic phosphoprotein that regulates cell proliferation.