

**Anti-Cytokeratin 18 Picoband Antibody**  
Catalog # ABO10178

**Specification**

**Anti-Cytokeratin 18 Picoband Antibody - Product Information**

Application	WB, IHC
Primary Accession	<a href="#">P05783</a>
Host	Rabbit
Reactivity	Human, Mouse, Rat
Clonality	Polyclonal
Format	Lyophilized

**Description**

Rabbit IgG polyclonal antibody for Keratin, type I cytoskeletal 18(KRT18) detection. Tested with WB, IHC-P in Human;Mouse;Rat.

**Reconstitution**

Add 0.2ml of distilled water will yield a concentration of 500ug/ml.

**Anti-Cytokeratin 18 Picoband Antibody - Additional Information**

**Gene ID** 3875

**Other Names**

Keratin, type I cytoskeletal 18, Cell proliferation-inducing gene 46 protein, Cytokeratin-18, CK-18, Keratin-18, K18, KRT18, CYK18

**Calculated MW**

48058 MW KDa

**Application Details**

Immunohistochemistry(Paraffin-embedded Section), 0.5-1 µg/ml, Human, Mouse, Rat, By Heat  
Western blot, 0.1-0.5 µg/ml, Human, Mouse, Rat

**Subcellular Localization**

Cytoplasm, perinuclear region. Nucleus, nucleolus.

**Tissue Specificity**

Expressed in colon, placenta, liver and very weakly in exocervix. Increased expression observed in lymph nodes of breast carcinoma. .

**Protein Name**

Keratin, type I cytoskeletal 18

**Contents**

Each vial contains 5mg BSA, 0.9mg NaCl, 0.2mg Na<sub>2</sub>HPO<sub>4</sub>, 0.05mg Na<sub>3</sub>.

**Immunogen**

E.coli-derived human Cytokeratin 18 recombinant protein (Position: E204-H430). Human Cytokeratin 18 shares 87.7% and 85.9% amino acid (aa) sequence identity with mouse and rat

Cytokeratin 18, respectively.

#### **Purification**

Immunogen affinity purified.

#### **Cross Reactivity**

No cross reactivity with other proteins

#### **Storage**

**At -20°C for one year. After reconstitution, at 4°C for one month. It can also be aliquotted and stored frozen at -20°C for a longer time. Avoid repeated freezing and thawing.**

### **Anti-Cytokeratin 18 Picoband Antibody - Protein Information**

**Name** KRT18

**Synonyms** CYK18

#### **Function**

Involved in the uptake of thrombin-antithrombin complexes by hepatic cells (By similarity). When phosphorylated, plays a role in filament reorganization. Involved in the delivery of mutated CFTR to the plasma membrane. Together with KRT8, is involved in interleukin-6 (IL-6)-mediated barrier protection.

#### **Cellular Location**

Nucleus matrix {ECO:0000250|UniProtKB:Q5BJY9}. Cytoplasm, perinuclear region. Nucleus, nucleolus. Cytoplasm {ECO:0000250|UniProtKB:Q5BJY9}

#### **Tissue Location**

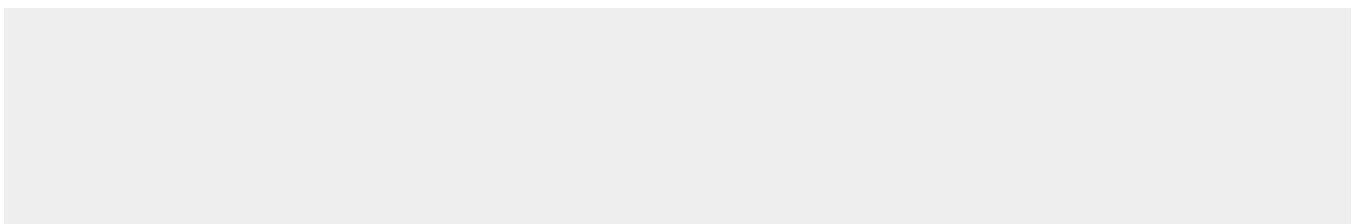
Expressed in colon, placenta, liver and very weakly in exocervix. Increased expression observed in lymph nodes of breast carcinoma.

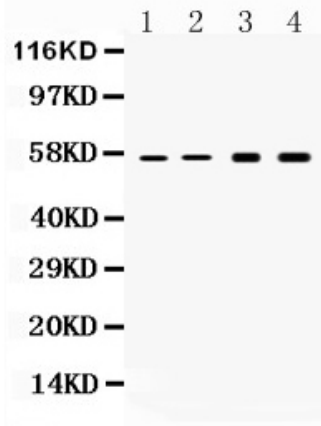
### **Anti-Cytokeratin 18 Picoband Antibody - Protocols**

Provided below are standard protocols that you may find useful for product applications.

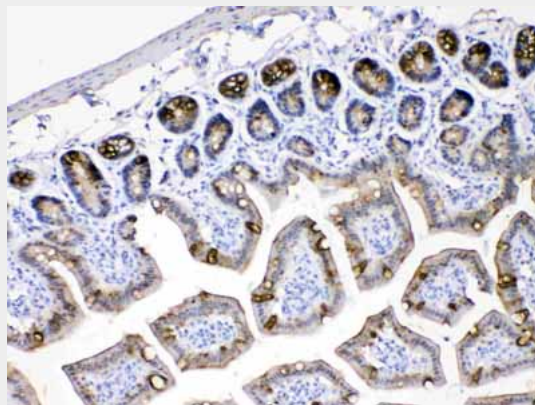
- [Western Blot](#)
- [Blocking Peptides](#)
- [Dot Blot](#)
- [Immunohistochemistry](#)
- [Immunofluorescence](#)
- [Immunoprecipitation](#)
- [Flow Cytometry](#)
- [Cell Culture](#)

### **Anti-Cytokeratin 18 Picoband Antibody - Images**

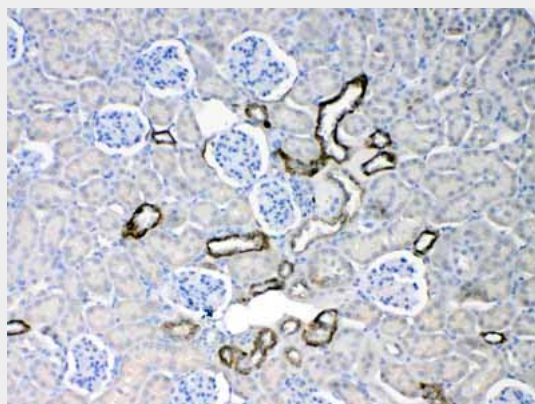




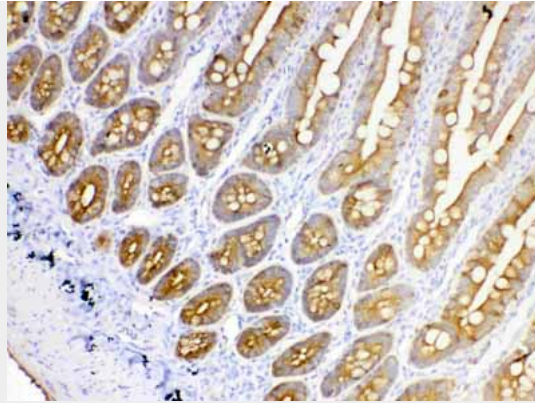
Western blot analysis of Cytokeratin 18 expression in rat liver extract (lane 1), mouse liver extract (lane 2), HELA whole cell lysates (lane 3) and HEPG2 whole cell lysates (lane 4). Cytokeratin 18 at 55KD was detected using rabbit anti- Cytokeratin 18 Antigen Affinity purified polyclonal antibody (Catalog # ABO10178) at 0.5  $\mu$ g/mL. The blot was developed using chemiluminescence (ECL) method .



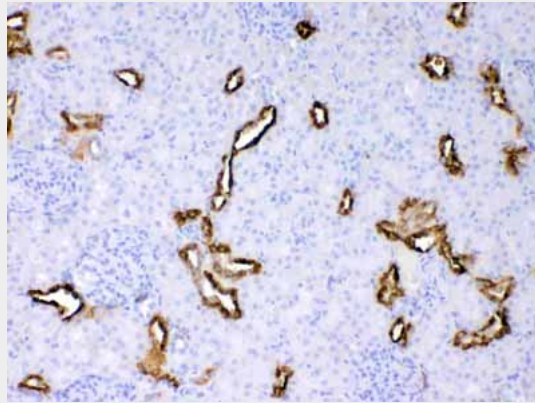
Cytokeratin 18 was detected in paraffin-embedded sections of mouse intestine tissues using rabbit anti- Cytokeratin 18 Antigen Affinity purified polyclonal antibody (Catalog # ABO10178) at 1  $\mu$ g/mL. The immunohistochemical section was developed using SABC method .



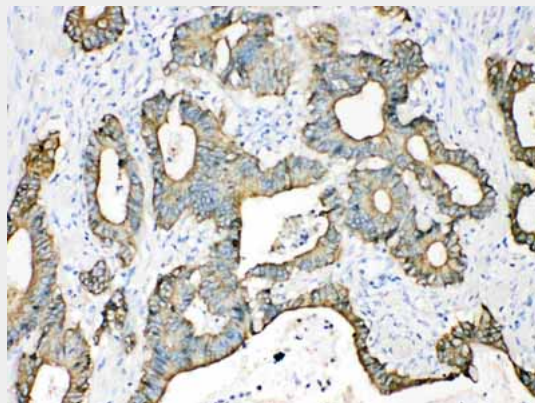
Cytokeratin 18 was detected in paraffin-embedded sections of mouse kidney tissues using rabbit anti- Cytokeratin 18 Antigen Affinity purified polyclonal antibody (Catalog # ABO10178) at 1  $\mu$ g/mL. The immunohistochemical section was developed using SABC method .



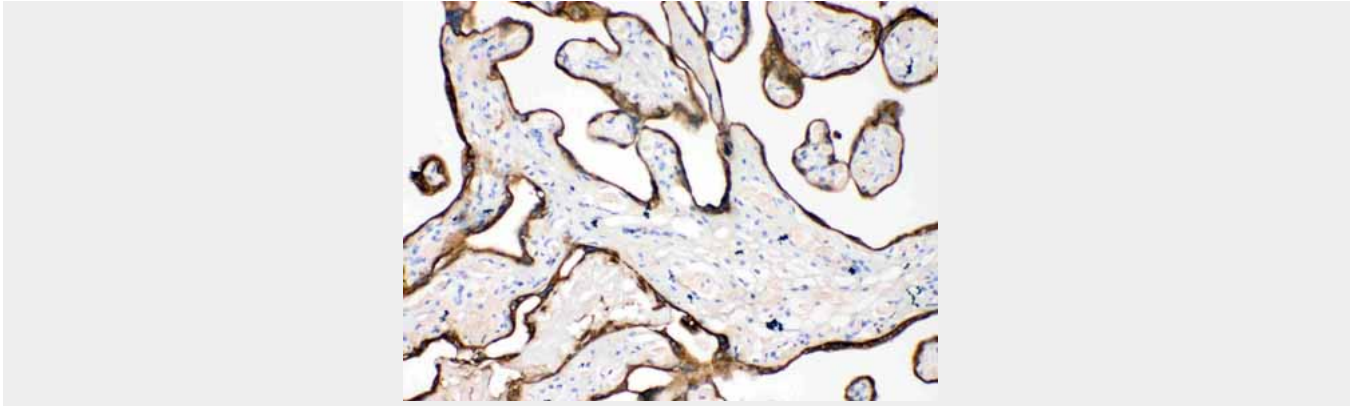
Cytokeratin 18 was detected in paraffin-embedded sections of rat intestine tissues using rabbit anti- Cytokeratin 18 Antigen Affinity purified polyclonal antibody (Catalog # ABO10178) at 1  $\mu$ g/mL. The immunohistochemical section was developed using SABC method .



Cytokeratin 18 was detected in paraffin-embedded sections of rat kidney tissues using rabbit anti- Cytokeratin 18 Antigen Affinity purified polyclonal antibody (Catalog # ABO10178) at 1  $\mu$ g/mL. The immunohistochemical section was developed using SABC method .



Cytokeratin 18 was detected in paraffin-embedded sections of human intestinal cancer tissues using rabbit anti- Cytokeratin 18 Antigen Affinity purified polyclonal antibody (Catalog # ABO10178) at 1  $\mu$ g/mL. The immunohistochemical section was developed using SABC method .



Cytokeratin 18 was detected in paraffin-embedded sections of human placenta tissues using rabbit anti- Cytokeratin 18 Antigen Affinity purified polyclonal antibody (Catalog # ABO10178) at 1  $\mu$ g/mL. The immunohistochemical section was developed using SABC method .

#### **Anti-Cytokeratin 18 Picoband Antibody - Background**

Keratin 18, mapped to 12q13.13, is a type I cytokeratin. It is, together with its filament partner keratin 8, perhaps the most commonly found products of the intermediate filament gene family. They are expressed in single layer epithelial tissues of the body. Mutations in this gene have been linked to cryptogenic cirrhosis. Two transcript variants encoding the same protein have been found for this gene.