

**Anti-Vinculin Picoband Antibody**  
Catalog # ABO10167**Specification****Anti-Vinculin Picoband Antibody - Product Information**

Application	WB
Primary Accession	<a href="#">P18206</a>
Host	Rabbit
Reactivity	Human
Clonality	Polyclonal
Format	Lyophilized

**Description**

Rabbit IgG polyclonal antibody for Vinculin(VCL) detection. Tested with WB in Human.

**Reconstitution**

Add 0.2ml of distilled water will yield a concentration of 500ug/ml.

**Anti-Vinculin Picoband Antibody - Additional Information**

**Gene ID** 7414

**Other Names**

Vinculin, Metavinculin, MV, VCL

**Calculated MW**

123799 MW KDa

**Application Details**

Western blot, 0.1-0.5 µg/ml, Human<br>

**Subcellular Localization**

Cytoplasm, cytoskeleton . Cell junction, adherens junction . Cell membrane ; Peripheral membrane protein ; Cytoplasmic side . Cell junction, focal adhesion . Cytoplasmic face of adhesion plaques. Recruitment to cell-cell junctions occurs in a myosin II- dependent manner. Interaction with CTNNB1 is necessary for its localization to the cell-cell junctions (By similarity). Colocalizes with LIMD1 in the focal adhesions. .

**Tissue Specificity**

Metavinculin is muscle-specific.

**Protein Name**

Vinculin

**Contents**

Each vial contains 5mg BSA, 0.9mg NaCl, 0.2mg Na<sub>2</sub>HPO<sub>4</sub>, 0.05mg Na<sub>3</sub>.

**Immunogen**

E.coli-derived human Vinculin recombinant protein (Position: E930-Q1134). Human Vinculin shares 87.7% amino acid (aa) sequence identity with both mouse and rat Vinculin.

### Purification

Immunogen affinity purified.

### Cross Reactivity

No cross reactivity with other proteins.

### Storage

At -20°C for one year. After r°Constitution, at 4°C for one month. It°Can also be aliquotted and stored frozen at -20°C for a longer time.Avoid repeated freezing and thawing.

## Anti-Vinculin Picoband Antibody - Protein Information

Name VCL

### Function

Actin filament (F-actin)-binding protein involved in cell- matrix adhesion and cell-cell adhesion. Regulates cell-surface E- cadherin expression and potentiates mechanosensing by the E-cadherin complex. May also play important roles in cell morphology and locomotion.

### Cellular Location

Cell membrane {ECO:0000250|UniProtKB:P12003}; Peripheral membrane protein {ECO:0000250|UniProtKB:P12003}; Cytoplasmic side {ECO:0000250|UniProtKB:P12003}. Cell junction, adherens junction {ECO:0000250|UniProtKB:P12003}. Cell junction, focal adhesion {ECO:0000250|UniProtKB:P12003}. Cytoplasm, cytoskeleton {ECO:0000250|UniProtKB:P85972}. Cell membrane, sarcolemma {ECO:0000250|UniProtKB:Q64727}; Peripheral membrane protein {ECO:0000250|UniProtKB:Q64727}; Cytoplasmic side {ECO:0000250|UniProtKB:Q64727}. Cell projection, podosome {ECO:0000250|UniProtKB:Q64727}. Note=Recruitment to cell-cell junctions occurs in a myosin II-dependent manner. Interaction with CTNNB1 is necessary for its localization to the cell-cell junctions {ECO:0000250|UniProtKB:P12003}

### Tissue Location

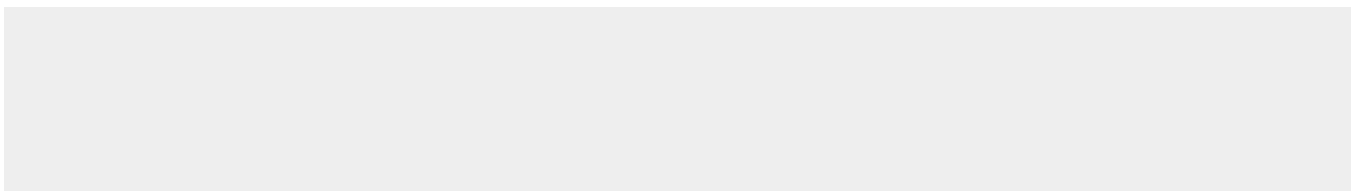
Metavinculin is muscle-specific.

## Anti-Vinculin Picoband Antibody - Protocols

Provided below are standard protocols that you may find useful for product applications.

- [Western Blot](#)
- [Blocking Peptides](#)
- [Dot Blot](#)
- [Immunohistochemistry](#)
- [Immunofluorescence](#)
- [Immunoprecipitation](#)
- [Flow Cytometry](#)
- [Cell Culture](#)

## Anti-Vinculin Picoband Antibody - Images



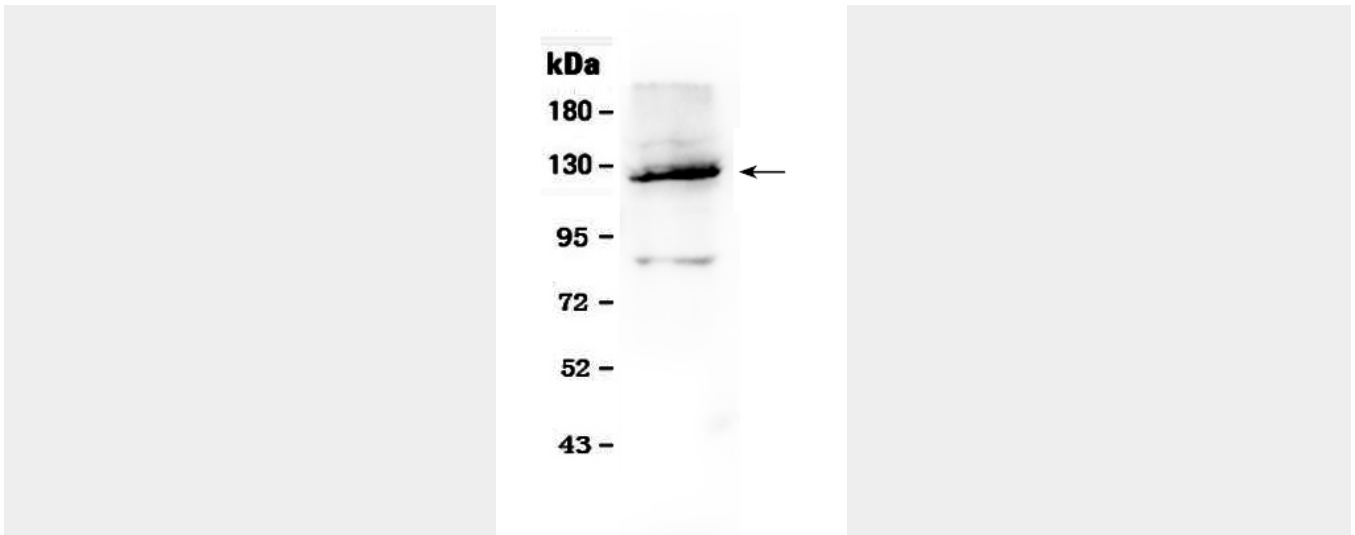


Figure 1. Western blot analysis of Vinculin using anti- Vinculin antibody (ABO10167). Electrophoresis was performed on a 5-20% SDS-PAGE gel at 70V (Stacking gel) / 90V (Resolving gel) for 2-3 hours. The sample well of each lane was loaded with 50ug of sample under reducing conditions. Lane 1: A549 whole cell lysates. After Electrophoresis, proteins were transferred to a Nitrocellulose membrane at 150mA for 50-90 minutes. Blocked the membrane with 5% Non-fat Milk/ TBS for 1.5 hour at RT. The membrane was incubated with rabbit anti- Vinculin antigen affinity purified polyclonal antibody (Catalog # ABO10167) at 0.5  $\mu$ g/mL overnight at 4 $^{\circ}$ C, then washed with TBS-0.1%Tween 3 times with 5 minutes each and probed with a goat anti-rabbit IgG-HRP secondary antibody at a dilution of 1:10000 for 1.5 hour at RT. The signal is developed using an Enhanced Chemiluminescent detection (ECL) kit with Tanon 5200 system. A specific band was detected for Vinculin at approximately 124KD. The expected band size for Vinculin is at 124KD.

#### Anti-Vinculin Picoband Antibody - Background

Vinculin is a cytoskeletal protein associated with cell-cell and cell-matrix junctions, where it is thought to function as one of several interacting proteins involved in anchoring F-actin to the membrane. Defects in VCL are the cause of cardiomyopathy dilated type 1W. Dilated cardiomyopathy is a disorder characterized by ventricular dilation and impaired systolic function, resulting in congestive heart failure and arrhythmia. Multiple alternatively spliced transcript variants have been found for this gene, but the biological validity of some variants has not been determined.