

**GDNF Antibody**  
Catalog # ASM10563

**Specification**

---

**GDNF Antibody - Product Information**

Application	<b>WB</b>
Primary Accession	<a href="#">P39905</a>
Other Accession	<a href="#">NP_000505.1</a>
Host	<b>Rabbit</b>
Reactivity	<b>Human, Rat</b>
Clonality	<b>Polyclonal</b>

**Description**

Rabbit Anti-Human GDNF Polyclonal

**Target/Specificity**

Detects ~24 kDa.

**Other Names**

Glial cell line-derived neurotrophic factor Antibody, Astrocyte-derived trophic factor Antibody, Astrocyte derived trophic factor 1 Antibody, Glial cell derived neurotrophic factor Antibody, ATF 1 Antibody, ATF 2 Antibody, Glial Cell Line Derived Neurotrophic Factor Antibody, ATF Antibody, Atf Antibody, HSCR3 Antibody, Astrocyte derived trophic factor Antibody, ATF2 Antibody, GDNF\_HUMAN Antibody, GDNF Antibody, Glial derived neurotrophic factor Antibody, ATF1 Antibody, gdnf Antibody, HFB1 GDNF Antibody, hGDNF Antibody

**Immunogen**

Synthetic peptide from the mid-protein of Human GDNF

**Purification**

Peptide Affinity Purified

Storage **-20°C**

**Storage Buffer**

PBS, 50% glycerol, 0.09% sodium azide

Shipping Temperature **Blue Ice or 4°C**

**Certificate of Analysis**

A 1:1000 dilution of SPC-710 was sufficient for detection of GDNF in 15 µg of human HeLa cell lysates by ECL immunoblot analysis using goat anti-rabbit IgG:HRP as the secondary antibody.

**Cellular Localization**

Secreted

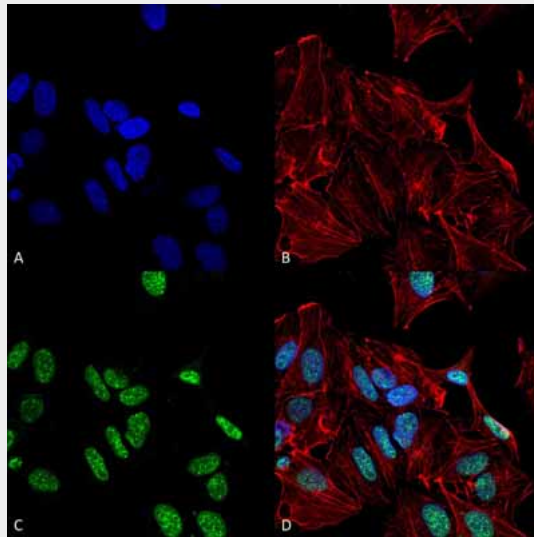
**GDNF Antibody - Protocols**

Provided below are standard protocols that you may find useful for product applications.

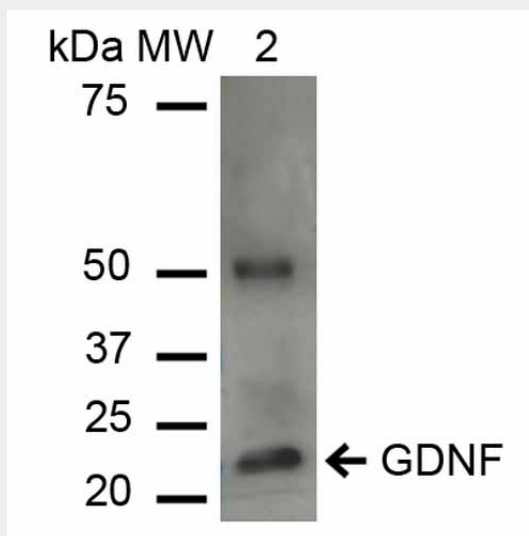
- [Western Blot](#)
- [Blocking Peptides](#)

- [Dot Blot](#)
- [Immunohistochemistry](#)
- [Immunofluorescence](#)
- [Immunoprecipitation](#)
- [Flow Cytometry](#)
- [Cell Culture](#)

**GDNF Antibody - Images**



Immunocytochemistry/Immunofluorescence analysis using Rabbit Anti-GDNF Polyclonal Antibody (ASM10563). Tissue: Neuroblastoma cell line (SK-N-BE). Species: Human. Fixation: 4% Formaldehyde for 15 min at RT. Primary Antibody: Rabbit Anti-GDNF Polyclonal Antibody (ASM10563) at 1:100 for 60 min at RT. Secondary Antibody: Goat Anti-Mouse ATTO 488 at 1:200 for 60 min at RT. Counterstain: Phalloidin Texas Red F-Actin stain; DAPI (blue) nuclear stain at 1:1000, 1:5000 for 60 min at RT, 5 min at RT. Localization: Vesicles, Nucleoplasm. Magnification: 60X. (A) DAPI (blue) nuclear stain (B) Phalloidin Texas Red F-Actin stain (C) GDNF Antibody (D) Composite.



Western blot analysis of Human HeLa cell lysates showing detection of ~23.7 kDa GDNF protein using Rabbit Anti-GDNF Polyclonal Antibody (ASM10563). Lane 1: Molecular Weight Ladder (MW). Lane 2: HeLa cell lysates. Load: 15 µg. Block: 5% Skim Milk in 1X TBST. Primary Antibody: Rabbit

Anti-GDNF Polyclonal Antibody (ASM10563) at 1:1000 for 2 hours at RT. Secondary Antibody: Goat Anti-Rabbit IgG: HRP at 1:1000 for 60 min at RT. Color Development: ECL solution for 6 min in RT. Predicted/Observed Size: ~23.7 kDa. Other Band(s): 50 kDa is a dimer.