

Ghrelin Antibody
Catalog # ASM10553**Specification**

Ghrelin Antibody - Product Information

Application	WB
Primary Accession	O9UBU3
Other Accession	NP_001128413.1
Host	Rabbit
Reactivity	Rat
Clonality	Polyclonal

Description

Rabbit Anti-Human Ghrelin Polyclonal

Target/Specificity

Detects ~13 kDa.

Other Names

Appetite-regulating hormone Antibody, ghrl Antibody, Ghrelin 28 Antibody, Protein M46 Antibody, GHRL_HUMAN Antibody, GHRL Antibody, Ghrelin Antibody, Growth hormone-releasing peptide Antibody, Motilin-related peptide Antibody, Appetite regulating hormone Antibody, Growth hormone releasing peptide Antibody, Growth hormone secretagogue Antibody, Motilin related peptide Antibody, Ghrelin/obestatin prepropeptide Antibody, Obestatin Antibody, MTLRP Antibody, Ghrelin 27 Antibody, M46 protein Antibody

Immunogen

Synthetic peptide from the mid-protein of Human Ghrelin

Purification

Peptide Affinity Purified

Storage **-20°C****Storage Buffer**

PBS, 50% glycerol, 0.09% sodium azide

Shipping Temperature **Blue Ice or 4°C****Certificate of Analysis**

A 1:1000 dilution of SPC-696 was sufficient for detection of Ghrelin in 15 µg of rat Pancreas cell lysates by ECL immunoblot analysis using goat anti-rabbit IgG:HRP as the secondary antibody.

Cellular Localization

Secreted

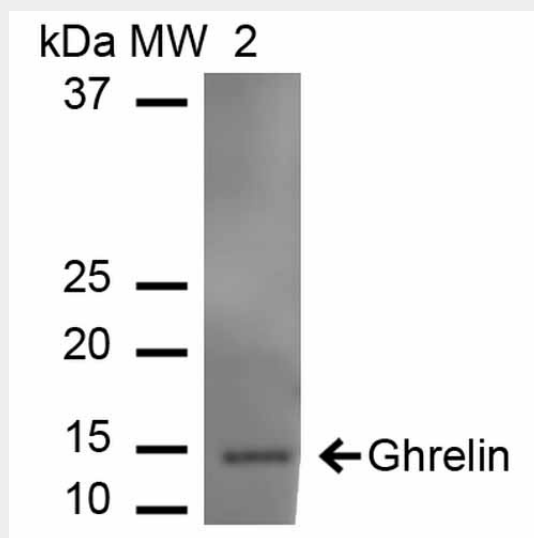
Ghrelin Antibody - Protocols

Provided below are standard protocols that you may find useful for product applications.

- [Western Blot](#)
- [Blocking Peptides](#)

- [Dot Blot](#)
- [Immunohistochemistry](#)
- [Immunofluorescence](#)
- [Immunoprecipitation](#)
- [Flow Cytometry](#)
- [Cell Culture](#)

Ghrelin Antibody - Images



Western blot analysis of Rat Pancreas showing detection of ~12.9 kDa Ghrelin protein using Rabbit Anti-Ghrelin Polyclonal Antibody (ASM10553). Lane 1: Molecular Weight Ladder (MW). Lane 2: Rat Pancreas cell lysates. Load: 15 μ g. Block: 5% Skim Milk in 1X TBST. Primary Antibody: Rabbit Anti-Ghrelin Polyclonal Antibody (ASM10553) at 1:1000 for 60 min at RT. Secondary Antibody: Goat Anti-Rabbit IgG: HRP at 1:2000 for 60 min at RT. Color Development: ECL solution for 6 min in RT. Predicted/Observed Size: ~12.9 kDa.