

**ULK3 Antibody**  
Catalog # ASM10522

**Specification**

---

**ULK3 Antibody - Product Information**

Application	<b>WB</b>
Primary Accession	<a href="#">O6PHR2</a>
Other Accession	<a href="#">NP_001092906.3</a>
Host	<b>Rabbit</b>
Reactivity	<b>Human, Mouse, Rat</b>
Clonality	<b>Polyclonal</b>

**Description**

Rabbit Anti-Human ULK3 Polyclonal

**Target/Specificity**

Detects ~53 kDa.

**Other Names**

Serine/threonine-protein kinase ULK3 Antibody, EC:2.7.11.1 Antibody, Ulk3 Antibody, DKFZP434C131 Antibody, Unc-51-like kinase 3 Antibody, FLJ90566 Antibody, ULK3\_HUMAN Antibody, unc 51 like kinase 3 (C. elegans) Antibody, ULK3 Antibody,

**Immunogen**

Synthetic peptide from the N-terminal of Human ULK3 (aa. 166-177)

**Purification**

Peptide Affinity Purified

Storage **-20°C**

**Storage Buffer**

PBS, 50% glycerol, 0.09% sodium azide

Shipping Temperature **Blue Ice or 4°C**

**Certificate of Analysis**

A 1:1000 dilution of SPC-642 was sufficient for detection of ULK3 in 15 µg of Human HeLa Cell Lysates by ECL immunoblot analysis using goat anti-rabbit IgG:HRP as the secondary antibody.

**Cellular Localization**

Cytoplasm

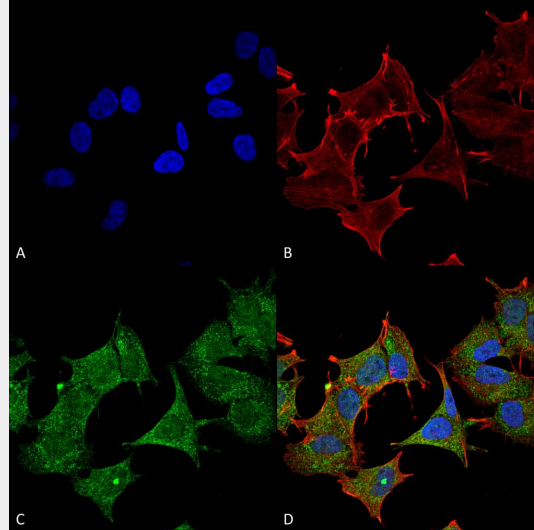
**ULK3 Antibody - Protocols**

Provided below are standard protocols that you may find useful for product applications.

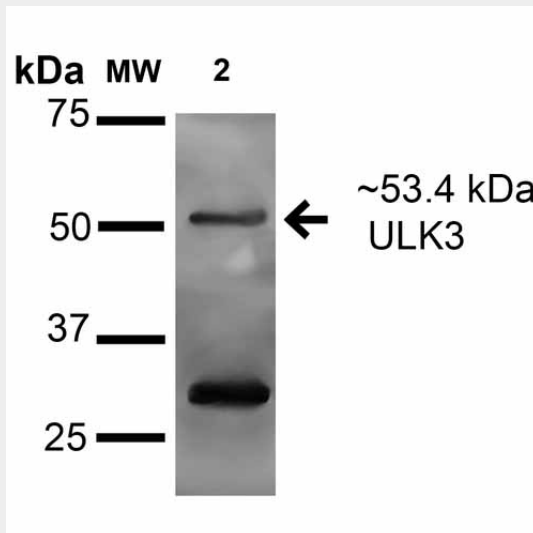
- [Western Blot](#)
- [Blocking Peptides](#)
- [Dot Blot](#)
- [Immunohistochemistry](#)
- [Immunofluorescence](#)

- [Immunoprecipitation](#)
- [Flow Cytometry](#)
- [Cell Culture](#)

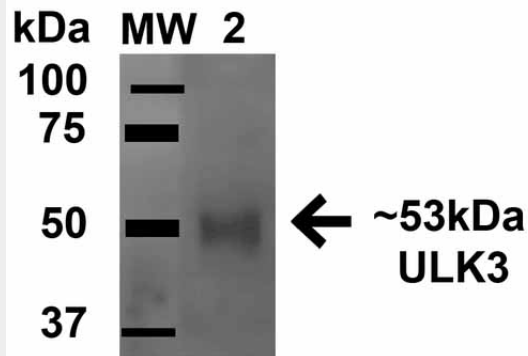
**ULK3 Antibody - Images**



Immunocytochemistry/Immunofluorescence analysis using Rabbit Anti-ULK3 Polyclonal Antibody (ASM10522). Tissue: Neuroblastoma cell line (SK-N-BE). Species: Human. Fixation: 4% Formaldehyde for 15 min at RT. Primary Antibody: Rabbit Anti-ULK3 Polyclonal Antibody (ASM10522) at 1:100 for 60 min at RT. Secondary Antibody: Goat Anti-Mouse ATTO 488 at 1:200 for 60 min at RT. Counterstain: Phalloidin Texas Red F-Actin stain; DAPI (blue) nuclear stain at 1:1000, 1:5000 for 60 min at RT, 5 min at RT. Localization: Cytoplasm. Magnification: 60X. (A) DAPI (blue) nuclear stain (B) Phalloidin Texas Red F-Actin stain (C) ULK3 Antibody (D) Composite.



Western blot analysis of Human A549 cell lysates showing detection of 53.4 kDa ULK3 protein using Rabbit Anti-ULK3 Polyclonal Antibody (ASM10522). Lane 1: Molecular Weight Ladder (MW). Lane 2: Human A549 cell lysates. Load: 15 µg . Block: 2% BSA and 2% Skim Milk in 1X TBST. Primary Antibody: Rabbit Anti-ULK3 Polyclonal Antibody (ASM10522) at 1:1000 for 16 hours at 4°C. Secondary Antibody: Goat Anti-Rabbit IgG: HRP at 1:2000 for 60 min at RT. Color Development: ECL solution for 6 min in RT. Predicted/Observed Size: 53.4 kDa. Other Band(s): ~25 kDa in all lysates.



Western blot analysis of Rat Brain cell lysates showing detection of 53.4 kDa ULK3 protein using Rabbit Anti-ULK3 Polyclonal Antibody (ASM10522). Lane 1: Molecular Weight Ladder (MW). Lane 2: Rat Brain cell lysates. Load: 15  $\mu$ g. Block: 5% Skim Milk in 1X TBST. Primary Antibody: Rabbit Anti-ULK3 Polyclonal Antibody (ASM10522) at 1:1000 for 1 hour at RT. Secondary Antibody: Goat Anti-Rabbit HRP at 1:2000 for 60 min at RT. Color Development: ECL solution for 6 min in RT. Predicted/Observed Size: 53.4 kDa.

#### **ULK3 Antibody - Background**

UNC-51 like kinase 3, ULK3, is a serine-threonine protein kinase that acts as a regulator of SHH signaling and autophagy. Is phosphorylates in vitro GLI2.

#### **ULK3 Antibody - References**

1. Malovergan A., et al. (2010) J Biol Chem. 285(39): 30079-30090. 2. Young A.R., et al. (2009) Genes Dev. 23(7):798-803.