

Anti-CCL23 / MIP3 Rabbit Monoclonal Antibody
Catalog # ABO16699

Specification

Anti-CCL23 / MIP3 Rabbit Monoclonal Antibody - Product Information

Application	WB, IHC
Primary Accession	P55773
Host	Rabbit
Isotype	Rabbit IgG
Reactivity	Human
Clonality	Monoclonal
Format	Liquid

Description

Anti-CCL23 / MIP3 Rabbit Monoclonal Antibody . Tested in WB, IHC applications. This antibody reacts with Human.

Anti-CCL23 / MIP3 Rabbit Monoclonal Antibody - Additional Information

Gene ID 6368

Other Names

C-C motif chemokine 23, CK-beta-8, CKB-8, Macrophage inflammatory protein 3, MIP-3, Myeloid progenitor inhibitory factor 1, MPIF-1, Small-inducible cytokine A23, CCL23(19-99), CCL23(22-99), CCL23(27-99), CCL23(30-99), CCL23, MIP3, MPIF1, SCYA23

Application Details

WB 1:500-1:2000
IHC 1:50-1:200

Contents

Rabbit IgG in phosphate buffered saline, pH 7.4, 150mM NaCl, 0.02% sodium azide and 50% glycerol, 0.4-0.5mg/ml BSA.

Immunogen

A synthesized peptide derived from human CCL23 / MIP3

Purification

Affinity-chromatography

Storage

Store at -20°C for one year. For short term storage and frequent use, store at 4°C for up to one month. Avoid repeated freeze-thaw cycles.

Anti-CCL23 / MIP3 Rabbit Monoclonal Antibody - Protein Information

Name CCL23

Synonyms MIP3, MPIF1, SCYA23

Function

Shows chemotactic activity for monocytes, resting T- lymphocytes, and neutrophils, but not for activated lymphocytes. Inhibits proliferation of myeloid progenitor cells in colony formation assays. This protein can bind heparin. Binds CCR1. CCL23(19-99), CCL23(22-99), CCL23(27-99), CCL23(30-99) are more potent chemoattractants than CCL23.

Cellular Location

Secreted.

Tissue Location

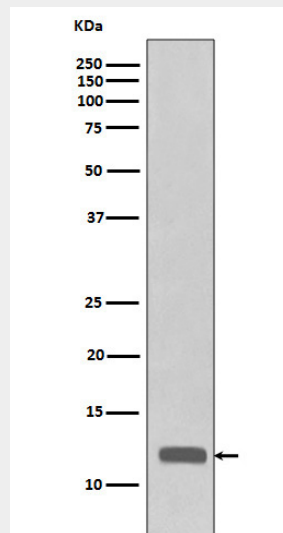
High levels in adult lung, liver, skeletal muscle and pancreas. Moderate levels in fetal liver, adult bone marrow and placenta. The short form is the major species and the longer form was detected only in very low abundance. CCL23(19-99), CCL23(22-99), CCL23(27-99), CCL23(30-99) are found in high levels in synovial fluids from rheumatoid patients.

Anti-CCL23 / MIP3 Rabbit Monoclonal Antibody - Protocols

Provided below are standard protocols that you may find useful for product applications.

- [Western Blot](#)
- [Blocking Peptides](#)
- [Dot Blot](#)
- [Immunohistochemistry](#)
- [Immunofluorescence](#)
- [Immunoprecipitation](#)
- [Flow Cytometry](#)
- [Cell Culture](#)

Anti-CCL23 / MIP3 Rabbit Monoclonal Antibody - Images



Western blot analysis of CCL23 / MIP3 expression in recombinant protein cell lysate.